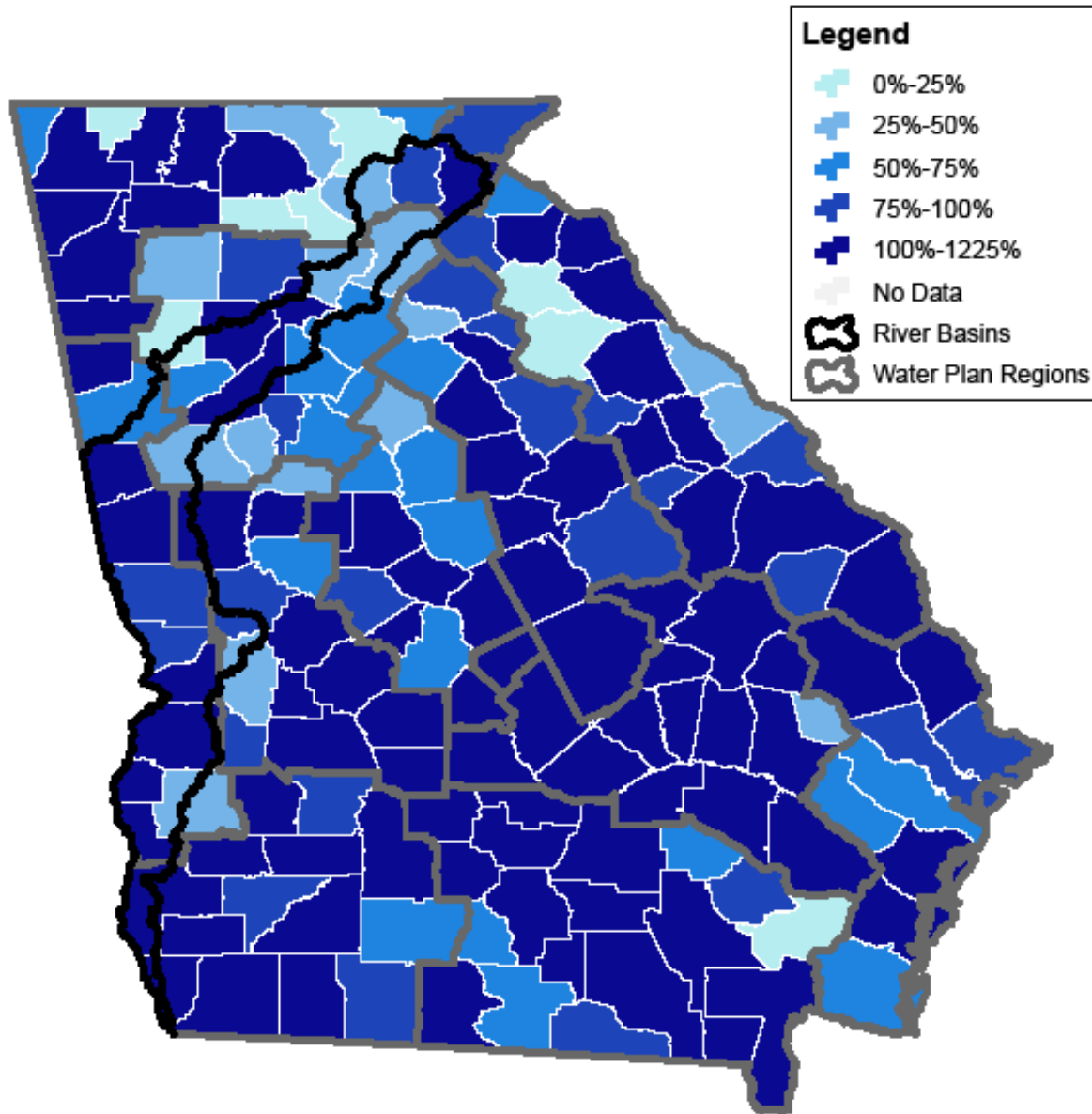


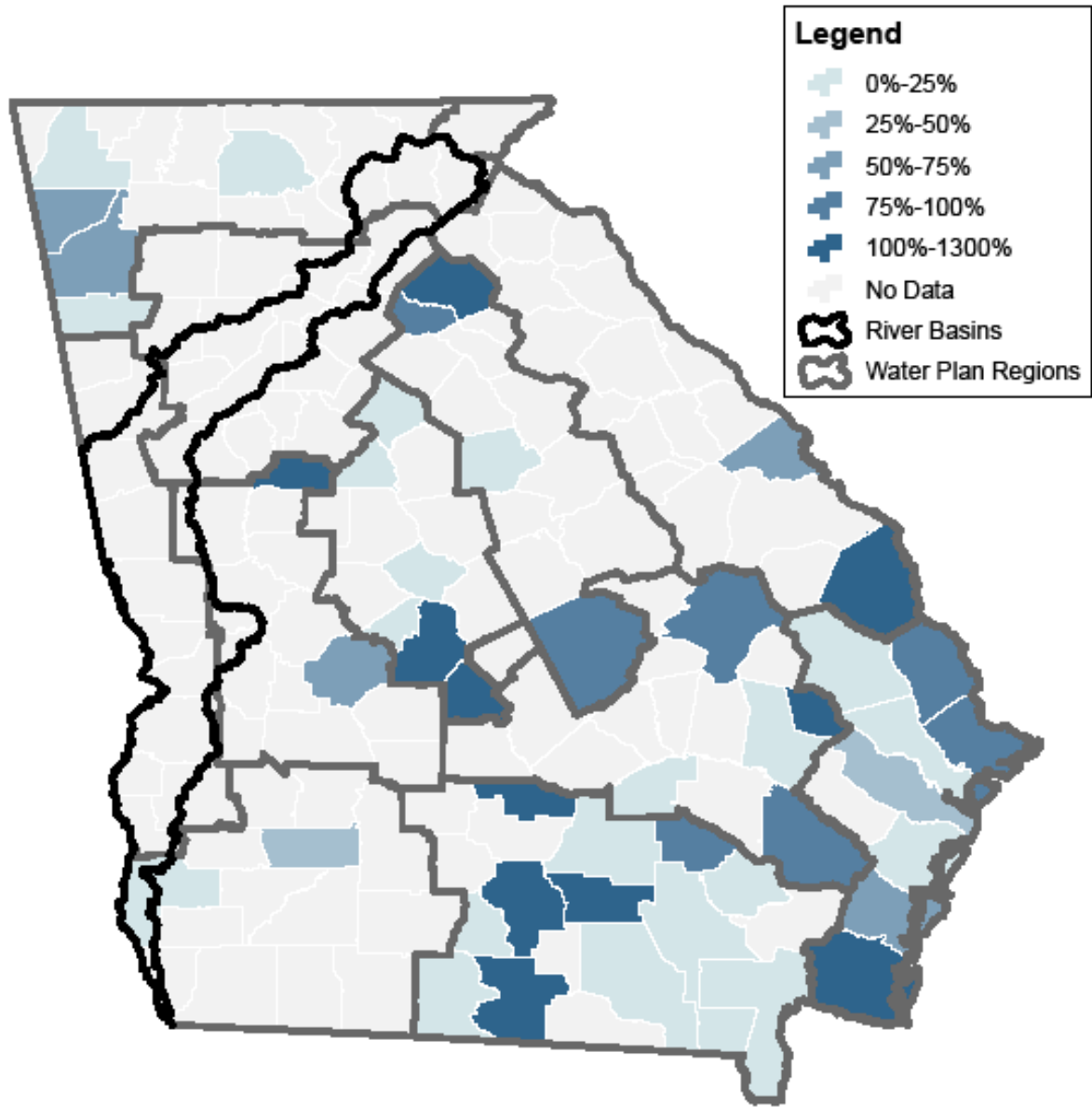


Initial Future Assimilative Capacity in the Chattahoochee River Basin

Current Permitted Municipal Infrastructure Compared to 2050 Demand in the Chattahoochee Watershed



Current Permitted Industrial Infrastructure Compared to 2050 Demand in the Chattahoochee Watershed



Permits Modeled in the Chattahoochee River Basin

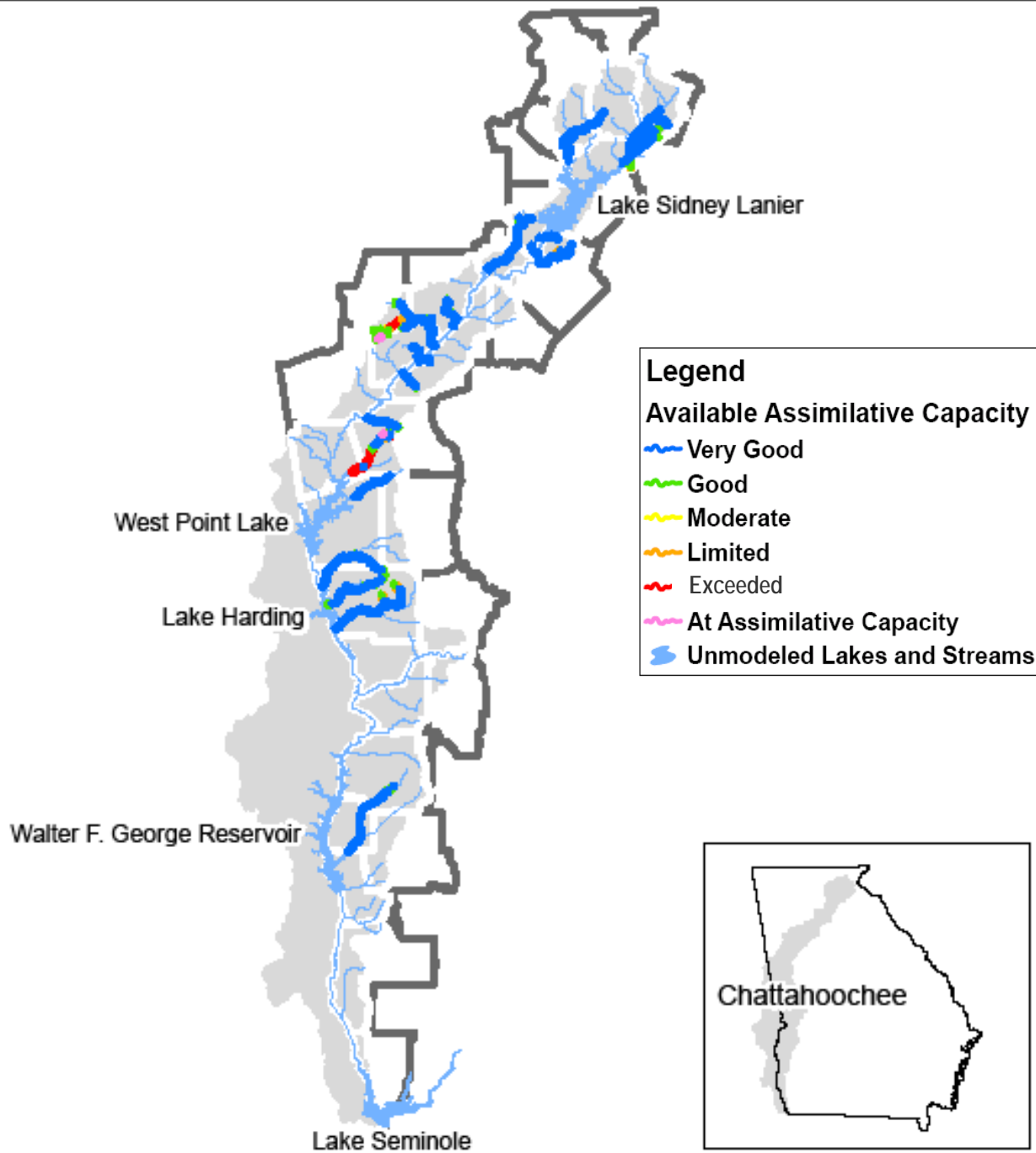
| Name | Permit | County | Receiving Water | Permitted | | | | | Notes | Discharge Type |
|---|-----------|-----------|----------------------------------|------------|---------------|----------------|-------------------------|-------------------------|--|----------------------|
| | | | | Flow (MGD) | BOD5 (mg/L) | Ammonia (mg/L) | Dissolved Oxygen (mg/L) | Total Phosphorus (mg/L) | | |
| Coweta County - Amall WPCP | GA0000299 | Coweta | Wahoo Creek | 0.06 | 30 | 17.4 | 5 | ----- | | Municipal |
| Coweta County - Arnco WPCP | GA0000311 | Coweta | Wahoo Creek | 0.1 | 30 | 17.4 | 5 | ----- | | Municipal |
| Bonnell Manufacturing Company | GA0000507 | Coweta | Mineral Springs Branch Tributary | 0.09 | ----- | ----- | ----- | ----- | Using background WQ in model. From 2005 only | |
| Industrial Speciality Fabrics (Westek Inc.) | GA0000833 | Troup | Yellowjacket Creek | 0 | ----- | ----- | ----- | ----- | only discharge air washer overflow & storm runoff | Industrial |
| Tyson Foods Inc. | GA0001074 | Forsyth | Orr Creek to Kelly Mill Branch | 1.5 | 132 (lbs/day) | 2 | 6 | 0.75 | 1.5 mgd used in WLA, 2.0 mgd in EPA application | Industrial |
| USAF Lockheed (Plant No. 6) | GA0001198 | Cobb | Nickajack Creek | 1.5 | 10 | 2.3 | 6 | 0.75 | | Municipal/Industrial |
| Cagle Inc. - Pine Mountain Valley | GA0001317 | Harris | Fort Creek to Mulberry Creek | 0.646 | 27.2 | 4 | 5 | Report | UOD=318 lbs/d (Aug-Sept), flow used 0.646 mgd (1 cfs) as in WLA | Industrial |
| Lumpkin WPCP | GA0021032 | Stewart | Hodchodkee Creek | 0.425 | 30 | 14 | 5 | 1 | | Municipal |
| Newnan - Mineral Springs WPCP | GA0021423 | Coweta | Mineral Springs Creek | 0.75 | 30 | 9.2 | 5 | 10.68 (kg/day) | Combined limit w Newnan Wahoo Creek WPCP | Municipal |
| City of Cornelia | GA0021504 | Habersham | Mud Creek | 3 | 25 | 1.5 | 6 | 1.1 | | Municipal |
| Callaway Gardens | GA0022527 | Harris | Mountain Creek | 0.5 | 30 | ----- | ----- | ----- | For DOSAG modeling: NH3 assumed to be 17.4 mg/L, DO assumed to be 2 mg/L | Municipal |
| Buford - Southside WPCP | GA0023167 | Gwinnett | Suwanee Creek Tributary | 2 | 18 | 5 | 5 | 0.75 | | Municipal |
| Buford - Westside WPCP | GA0023175 | Gwinnett | Richland Creek | 0.25 | 30 | 10 | 4 | ----- | | Municipal |
| Lula Pond WPCP | GA0024767 | Hall | Lula Branch Trib to Hagen Creek | 0.082 | 30 | ----- | ----- | 10.4 (kg/mo) | Not modeled in future resource assessment because plant will be replaced by new Lula Pond discharge to Hagan Creek | Municipal |
| Pine Mountain WPCP | GA0025691 | Harris | Turkey Creek to Flat Shoal Cr | 0.3 | 20 | 5 | 5 | ----- | Seasonal Limit | Municipal |
| Dahlonega WPCP | GA0026077 | Lumpkin | Yahoola Creek | 1.44 | 30 | 8 | 2 | 0.13 | | Municipal |
| Villa Rica - Sweetwater WPCP | GA0027171 | Douglas | Town Branch | 0.52 | 20 | 5 | 5 | 0.75 | | Municipal |
| Douglasville - North WPCP | GA0030350 | Douglas | Gothards Creek | 2 | 5 | 1 | 6 | 0.13 | | Municipal |
| Newnan - Wahoo Creek WPCP | GA0031721 | Coweta | Wahoo Creek | 3 | 18 | 1.1 | 2 | 10.68 (kg/day) | Seasonal Limit Combined limit w Newnan Mineral Spring WPCP | Municipal |
| Demorest WPCP | GA0032506 | Habersham | Hazel Creek | 0.4 | 30 | ----- | 6 | 36.29 (kg/mo) | NH3 assumed to be 17.4 mg/L | Municipal |
| Clarksville WPCP | GA0032514 | Habersham | Soquee River | 0.75 | 30 | 17.4 | 2 | 95.94 (kg/mo) | | Municipal |
| City of Baldwin | GA0033243 | Habersham | Little Mud Creek | 0.8 | 20 | 2.2 | 6 | 1.0 | Two seasonal discharge limits | Municipal |
| Hamilton WPCP | GA0033618 | Harris | Palmetto Creek to Mulberry Cr | 0.1 | 30 | ----- | ----- | ----- | For DOSAG modeling: NH3 assumed to be 17.4 mg/L, DO assumed to be 2 mg/L | Municipal |
| Habersham High School | GA0033952 | Habersham | Lick Log Creek | 0.018 | 30 | ----- | ----- | 168 (kg/year) | For DOSAG modeling: NH3 assumed to be 17.4 mg/L, DO assumed to be 2 mg/L | Municipal |
| Cleveland WPCP | GA0036820 | White | Tesnatee Creek | 0.75 | 20 | 10 | 2 | 159 (kg/mo) | | Municipal |

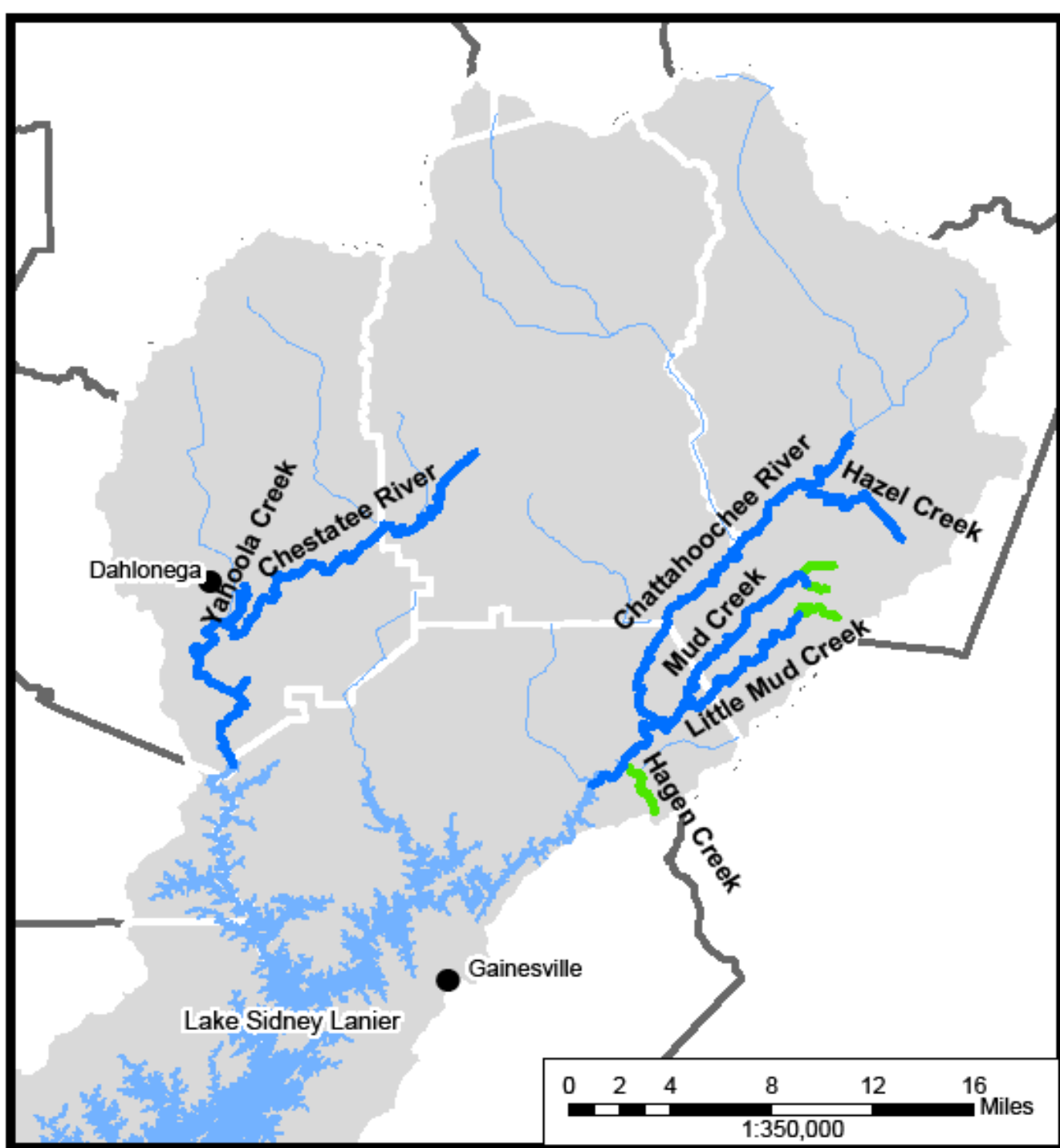
Permits Modeled in the Chattahoochee River Basin

| Name | Permit | County | Receiving Water | Permitted | | | | | Notes | Discharge Type |
|--|-----------|----------|------------------------|------------|-------------|----------------|-------------------------|-------------------------|---|----------------|
| | | | | Flow (MGD) | BOD5 (mg/L) | Ammonia (mg/L) | Dissolved Oxygen (mg/L) | Total Phosphorus (mg/L) | | |
| Forsyth County - Dick Creek WRF | GA0038563 | Forsyth | Dick Creek | 0.95 | 5 | 1 | 5 | 0.13 | Cold weather discharge | Municipal |
| Forsyth Co Fowler Reuse | GA0038695 | Forsyth | Big Creek | 3.13 | 5 | 1 | 5 | 0.13 | Cold weather discharge | Municipal |
| Paulding County Coppermine WPCP | GA0038865 | Paulding | Mill Cr to Lick Log Cr | 4 | 2 | 0.5 | 6 | 0.13 | Permit issued 5/29/2007 (B1, B2, B3) | Municipal |
| Paulding County Public Works WRF | GA0038890 | Paulding | Upper Sweetwater Cr | 1 | 5 | 1.5 | 5 | 0.13 | Cold weather discharge. Permit issued 7/2008. | Municipal |
| Lula Pond WPCP | GA0039039 | Hall | Hagen Creek | 0.375 | 30 | 2 | 5 | 10.4 (kg/mo) | It will replace GA0024767 | Municipal |
| Windermere Reuse Facility | GA0039128 | Forsyth | James Creek | 0.69 | 5 | ----- | 5 | 0.13 | Cold weather discharge | Municipal |
| City of Cumming | GA0046019 | Forsyth | Big Creek | 8 | 4 | 1 | 6 | 0.13 | | Municipal |
| Fulton County - Little Bear Creek | GA0047104 | Fulton | Little Bear Creek | 0.1 | 20 | 5 | 5 | | | Municipal |
| Atlanta - R.M. Clayton WPCP | GA0021482 | Fulton | Chattahoochee River | 100 | 15 | 3.7 | 5 | 0.64 | Chattahoochee River GA-RIV-1 Model | Municipal |
| Atlanta - Utoy Creek WPCP | GA0021458 | Fulton | Chattahoochee River | 40 | 15 | 3.7 | 5 | 0.64 | Chattahoochee River GA-RIV-1 Model | Municipal |
| Atlanta - South River WPCP | GA0024040 | Fulton | Chattahoochee River | 48 | 15 | 4.4 | 5 | 0.64 | Chattahoochee River GA-RIV-1 Model | Municipal |
| Fulton County - Big Creek WPCP | GA0024333 | Fulton | Chattahoochee River | 38 | 2.9 | 0.5 | 6 | 0.3 | Chattahoochee River GA-RIV-1 Model | Municipal |
| Fulton County - Camp Creek WPCP | GA0025381 | Fulton | Chattahoochee River | 24 | 2.9 | 0.5 | 7 | 0.3 | Chattahoochee River GA-RIV-1 Model | Municipal |
| Fulton County - Johns Creek WPCP | GA0038831 | Fulton | Chattahoochee River | 20 | 2.9 | 0.5 | 6 | 0.22 | Chattahoochee River GA-RIV-1 Model | Municipal |
| Douglas County - Sweetwater Creek WPCP | GA0047201 | Douglas | Chattahoochee River | 6 | 2.9 | 0.5 | 6 | 0.3 | Chattahoochee River GA-RIV-1 Model | Municipal |
| Douglas County - South Central WPCP | GA0038709 | Douglas | Chattahoochee River | 6 | 2.9 | 0.5 | 6 | 0.3 | Chattahoochee River GA-RIV-1 Model | Municipal |
| Cobb County - R.L. Sutton WPCP | GA0026140 | Cobb | Chattahoochee River | 60 | 2.9 | 0.5 | 6 | 0.3 | Chattahoochee River GA-RIV-1 Model | Municipal |
| Cobb County - South WPCP | GA0026158 | Cobb | Chattahoochee River | 40 | 13 | 1.8 | 7 | 0.75 | Chattahoochee River GA-RIV-1 Model | Municipal |
| Gwinnett County - Crooked Creek WPCP | GA0026433 | Gwinnett | Chattahoochee River | 45 | 2.9 | 0.5 | 6 | 0.3 | Chattahoochee River GA-RIV-1 Model | Municipal |
| Fulton County - Cauley Creek WPCP | GA0038440 | Fulton | Chattahoochee River | 5 | 2.9 | 0.5 | 7 | 0.13 | Chattahoochee River GA-RIV-1 Model | Municipal |

Available Assimilative Capacity in the Chattahoochee River Basin

| Model Run | Basin | Available Assimilative Capacity (Total Mileage) | | | | |
|-----------|---------------|---|------|----------|---------|------------------|
| | | Very Good | Good | Moderate | Limited | None or Exceeded |
| Baseline | Chattahoochee | 313 | 59 | 16 | 15 | 0.1 |
| Permitted | Chattahoochee | 335 | 31 | 3.2 | 13 | 21 |

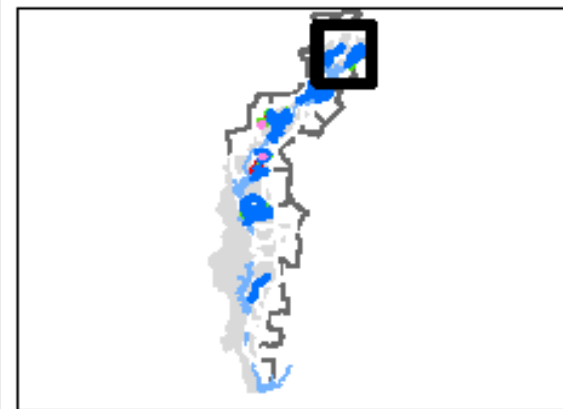


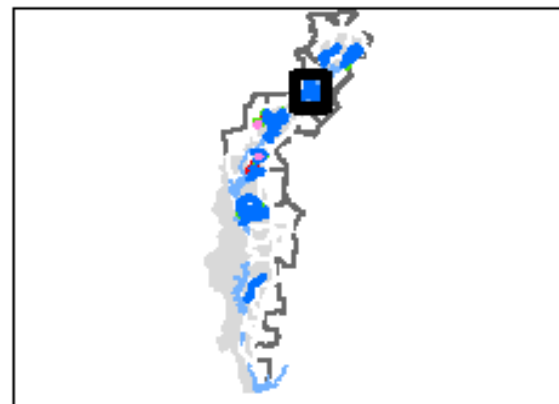
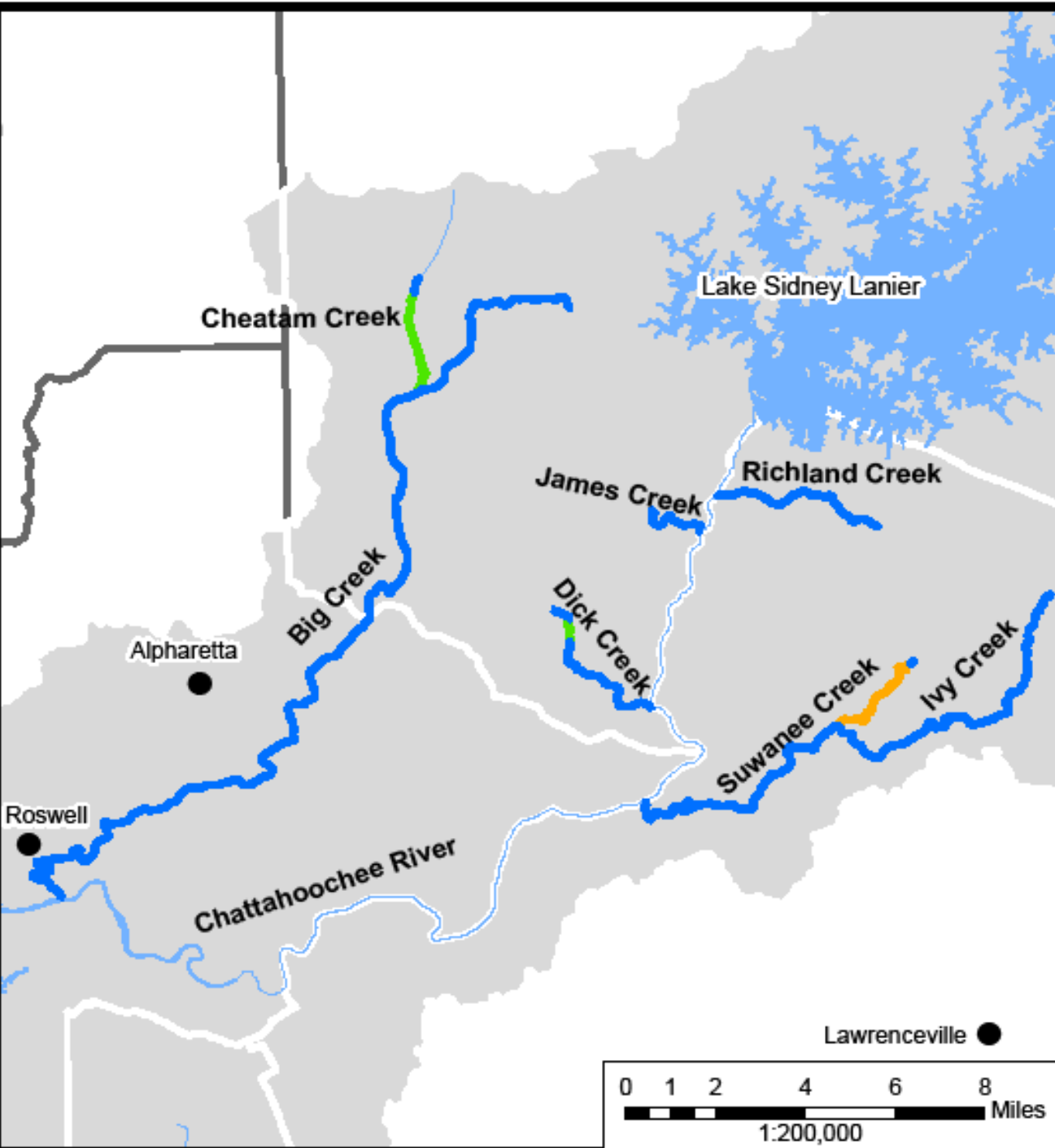


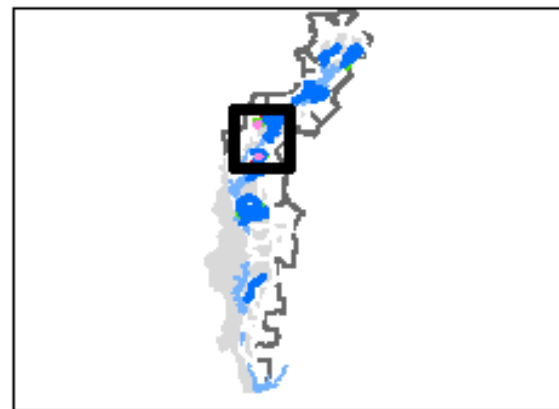
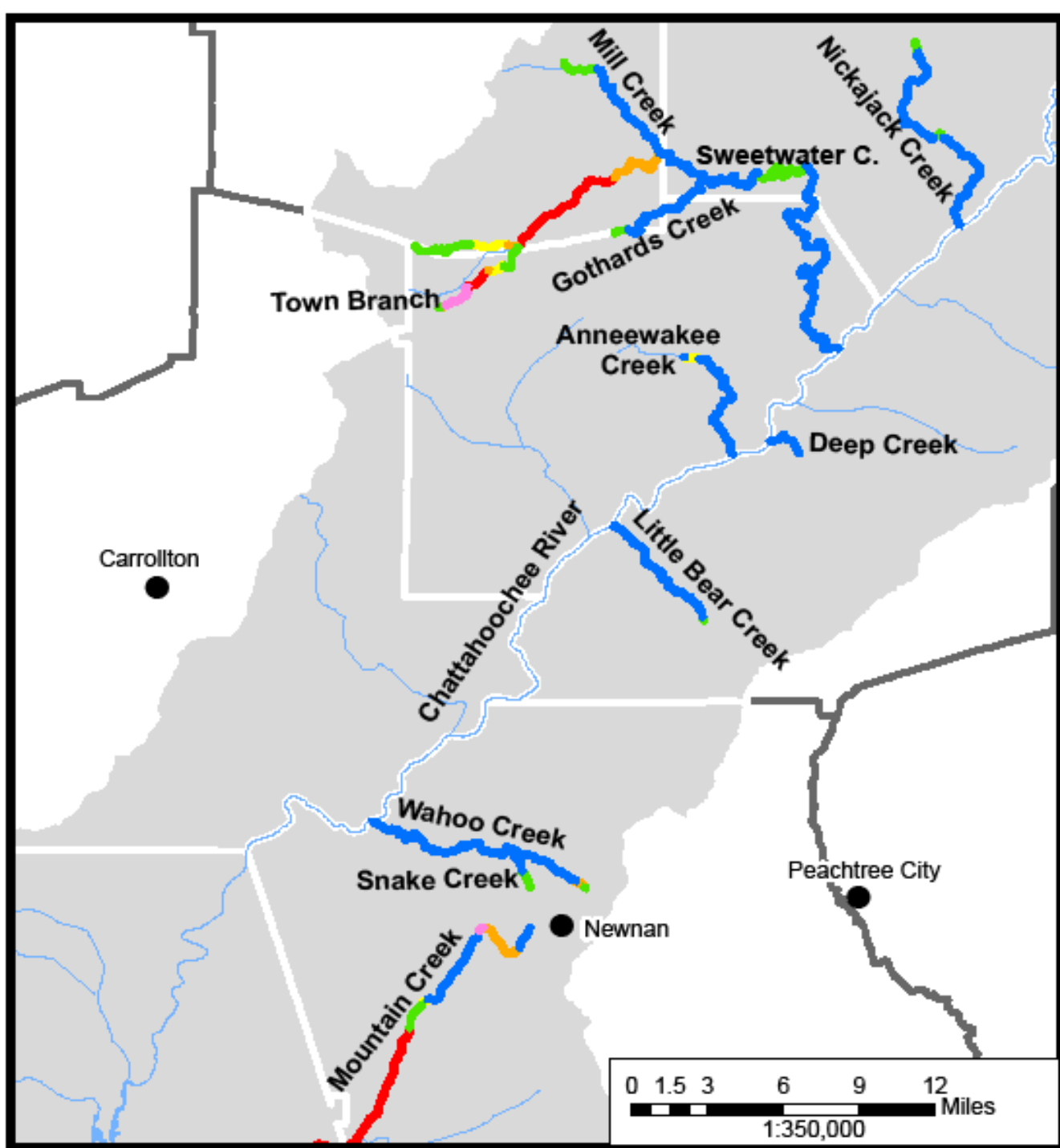
Legend

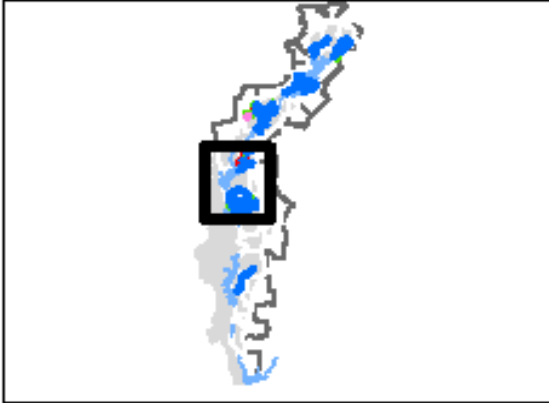
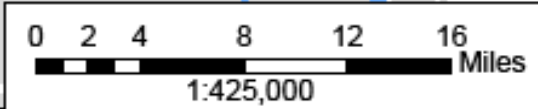
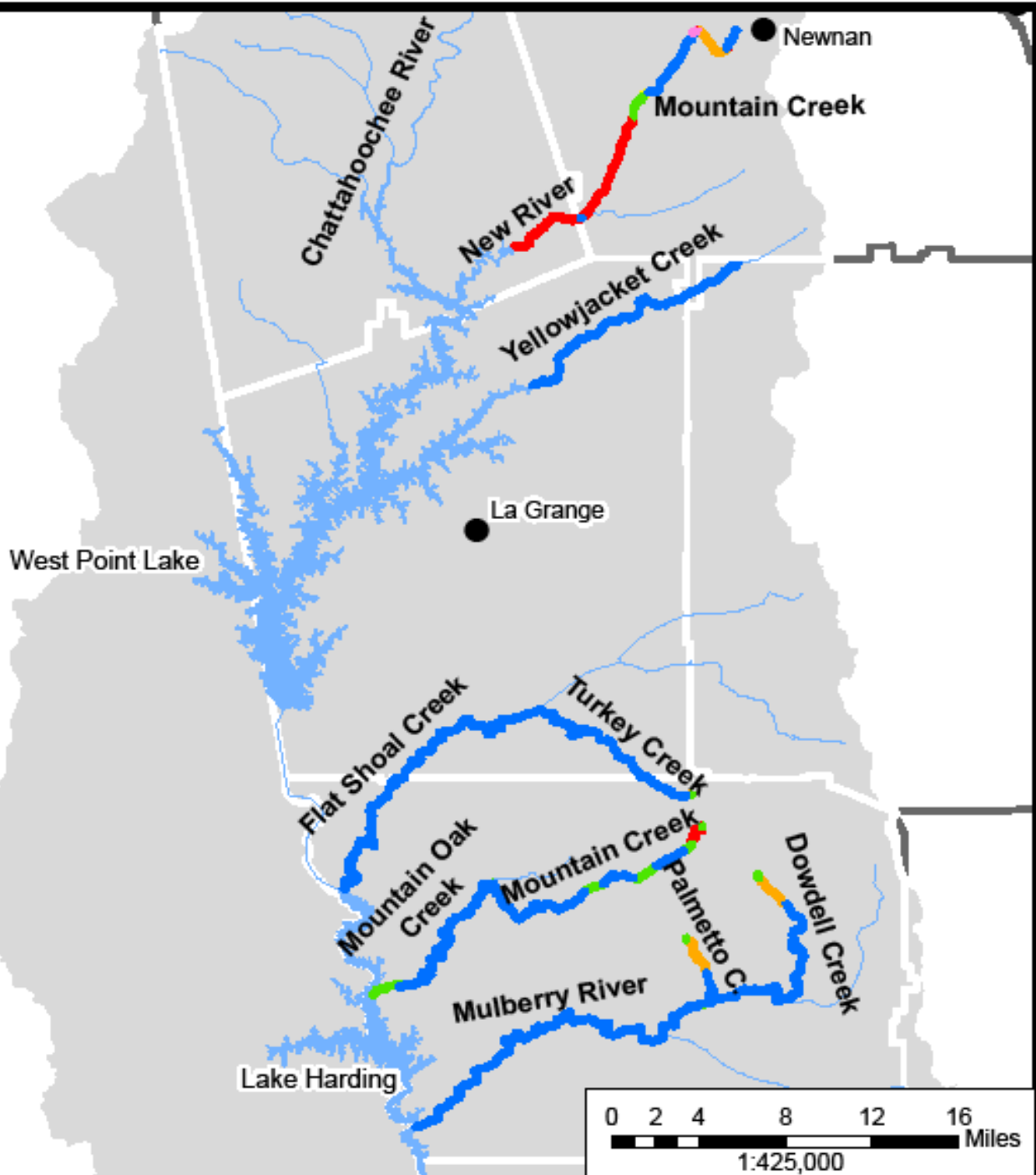
Available Assimilative Capacity

- Very Good
- Good
- Moderate
- Limited
- Exceeded
- At Assimilative Capacity
- Unmodeled Lakes and Streams









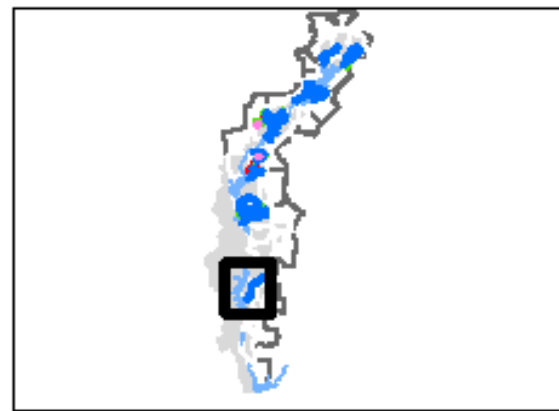
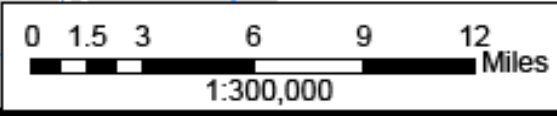
Walter F. George Reservoir

Hodchodkee Creek

Legend

Available Assimilative Capacity

- Very Good
- Good
- Moderate
- Limited
- Exceeded
- At Assimilative Capacity
- Unmodeled Lakes and Streams





Questions?