

Georgia Environmental Protection Division
Middle Chattahoochee Water Council
Existing Regulatory and Local Plan Summary

I. INTRODUCTION

The Georgia Comprehensive State-wide Water Management Plan as approved by the Water Council on January 8, 2008, is the guiding document for the development of Regional Water Plans. The Middle Chattahoochee Regional Planning Council (the Council) was designated to oversee the development of the Regional Water Plan for the Middle Chattahoochee Water Planning Region. Final recommendations are to be submitted by the Council to the Director of the Georgia Environmental Protection Division (EPD) on May 2, 2011. The Regional Water Plan utilizes an integrated water management approach which includes water resource assessments, estimates of current and future water needs for supply and assimilative capacities, and identification and selection of management practices. It also builds upon the knowledge base of previous planning efforts by state and local governments and authorities throughout the planning region.

This memorandum summarizes existing water resources related regulations and reviews existing plans and practices, which were used to assist in the development of the Regional Water Plan by the Middle Chattahoochee Council. In particular, the Council conducted a comprehensive review of existing local and regional water management plans and relevant related documents to frame the selection of management practices. When possible, successful management practices already planned for and/or in use in the Region formed the basis for the water management practices selected by the Council. The information reviewed and summarized in this memorandum includes the following:

- Georgia Water Quality Control Act
- Watershed Assessments and Watershed Protection Plans
- *Water Quality in Georgia 2006- 2007* (305(b)/303(d) Report)
- TMDL Implementations Plans
- Nonpoint Source Implementation Plans
- Local Comprehensive Plans
- Water and sewer master plans
- Stormwater master plans
- Plans directly submitted for consideration by Council members
- Review of Local Comprehensive Plans and Water Resources Best Management Practices provided by the River Valley and Three Rivers regional commissions

Georgia Environmental Protection Division
Middle Chattahoochee Water Council
Existing Regulatory and Local Plan Summary

A. Regulatory Background

This section summarizes guiding federal and state regulations which affect water supply, water quality, and human health and safety. The Federal Water Pollution Control Act of 1972, as amended by the Clean Water Act of 1977, and the Federal Safe Drinking Water Act (SDWA) of 1986 are the primary federal regulatory drivers behind protecting and improving water quality. Administration and enforcement of these Acts in Georgia are delegated to the EPD by the Environmental Protection Agency (EPA). Provisions of the Clean Water Act are established in the state primarily by the Water Quality Control Act, Chapter 391-3-6 of the Georgia Rules and Regulations. The rule provides guidance on water use classifications and water quality standards, surface water intakes, wastewater treatment and discharges, stormwater permitting, land disposal, underground injection control, water quality monitoring requirements, the State Revolving Fund (SRF) and state-wide water management planning.

The National Pollutant Discharge Elimination System (NPDES) permit program was established under the Clean Water Act to control water pollution by regulating the discharge of pollutants into waters of the United States from point sources. The NPDES program covers several pollutant sources that are regulated by permits issued by the EPD. These permits are based upon allowable Total Maximum Daily Loads (TMDLs) for a given impaired water body, or a maximum amount of pollutant that a waterbody can safely assimilate and still meet prescribed water quality standards.

Chapter 391-3-5 of the Georgia rules includes provisions as promulgated by the Georgia Safe Drinking Water Act of 1977 (OCGA 12-5-170), the Georgia Water Supply Act (OCGA 12-5-470), and the Georgia Water Well Standards Act (OCGA 12-5-120). Additional legislation affecting water quality and water resources throughout the state includes the Georgia Erosion & Sedimentation Control Act, the Georgia Safe Dams Act, and the Georgia Endangered Wildlife Act.

Statewide watershed protection programs which implement these regulations are illustrated in Figure I-1.

Georgia Environmental Protection Division
 Middle Chattahoochee Water Council
Existing Regulatory and Local Plan Summary

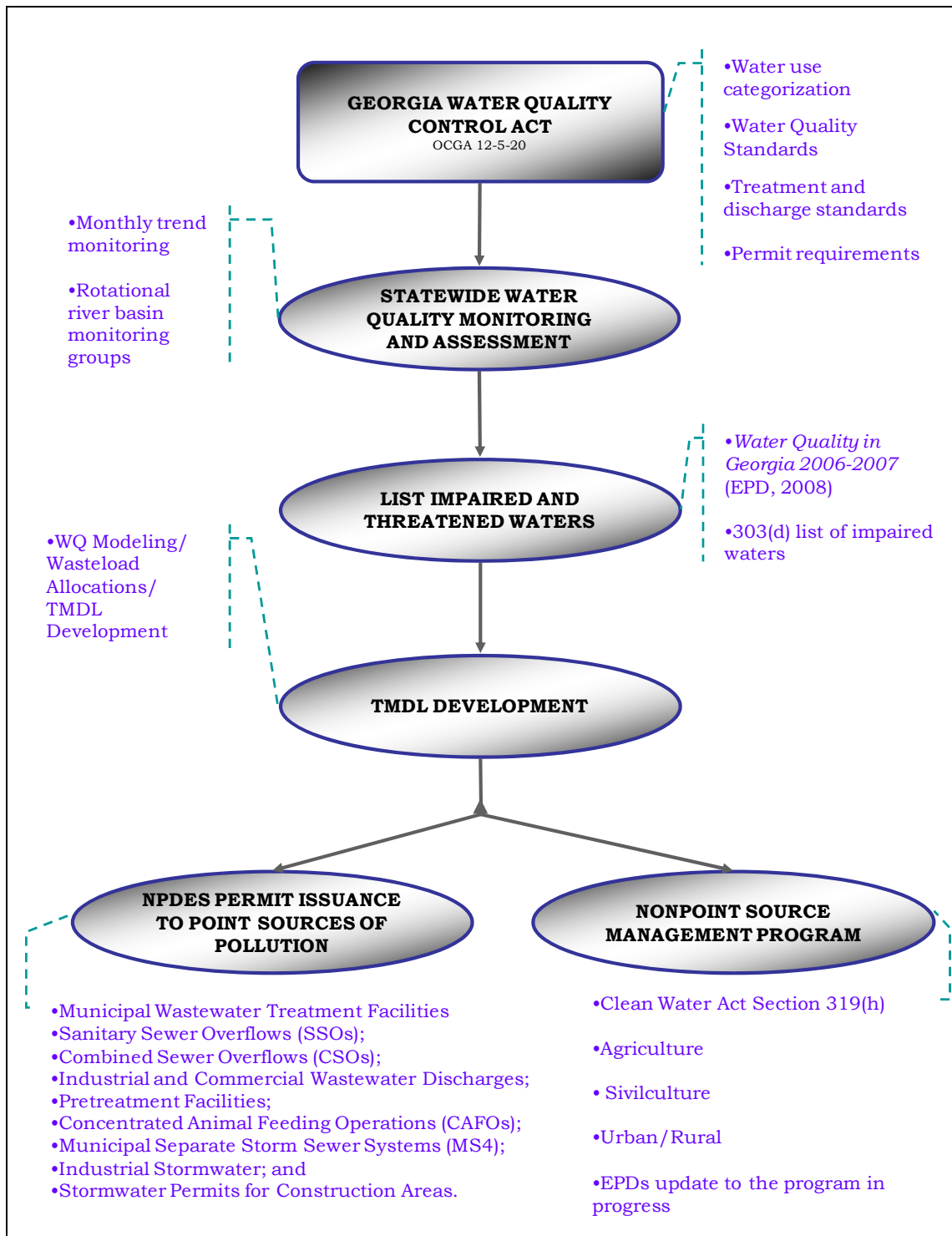


Figure I-1. Statewide Watershed Protection Program

Georgia Environmental Protection Division
 Middle Chattahoochee Water Council
Existing Regulatory and Local Plan Summary

B. Watershed Assessments and Watershed Protection Plans

EPD requires watershed monitoring plans, watershed assessments, and watershed protection plans from all publicly owned treatment works greater than 1 MGD or for new or expanding facilities as a part of the National Pollutant Discharge Elimination System. Those activities initiate monitoring, assessment and ultimately the establishment of Best Management Practices (BMPs) employed to enhance water quality from point and non-point sources of pollution. The three elements are outlined in Figure I-2.

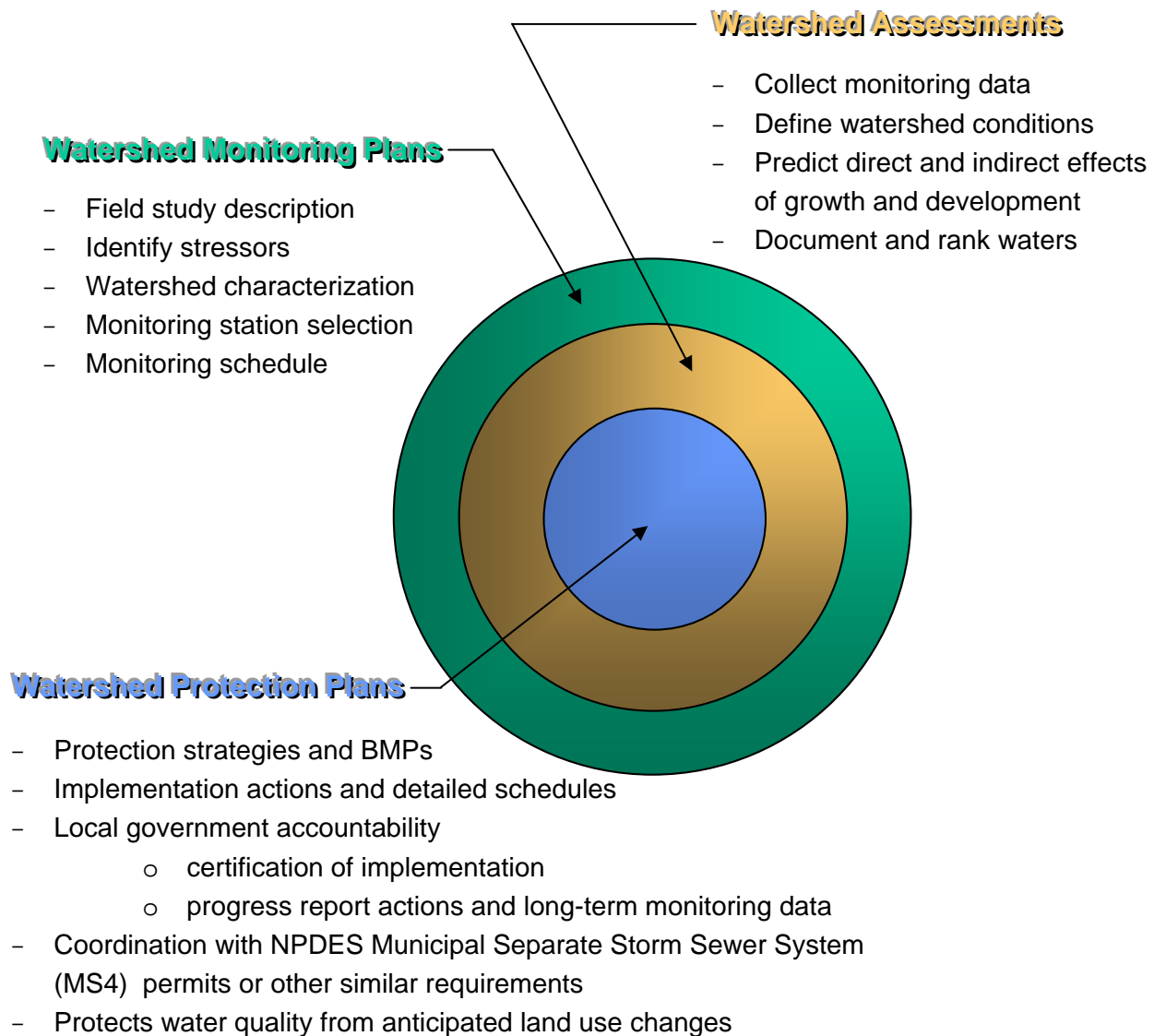


Figure I-2. Watershed Monitoring, Assessments, and Protection Plans

Georgia Environmental Protection Division
Middle Chattahoochee Water Council
Existing Regulatory and Local Plan Summary

C. Water Quality in Georgia 2006-2007 (305(b)/303(d) Report)

The state of Georgia assesses its water bodies for compliance with water quality standards criteria established for their designated uses as required by the Federal Clean Water Act (CWA). Waters of the state are monitored by EPD, USGS, and other local authorities contracted by EPD. Permanent monthly trend monitoring sites and an annual rotational river basin monitoring group system are in place throughout the state to gather water quality data. Assessed water bodies are placed into two categories, supporting or not supporting their designated uses, depending on water quality assessment results. These water bodies are found on Georgia's 305(b)/303(d) list, as required by those sections of the Clean Water Act and are published in *Water Quality in Georgia 2006-2007* (EPD 2008).

Some of the not supporting water bodies are assigned to Georgia's 303(d) list, if "data indicates that at least one designated use is not being met and TMDL(s) need to be completed for one or more pollutants". Water bodies on the 303(d) list are required to have a Total Maximum Daily Load (TMDL) evaluation for the water quality constituent(s) in violation of the water quality standard. The TMDL represents the sum of allowable loads of a single pollutant from all contributing sources (including nonpoint sources) and includes a margin of safety and seasonal variations in water quality. The TMDL process allows water quality-based controls to be developed to reduce pollution and restore and maintain water quality.

Water Quality in Georgia 2006-2007 also includes information and background on Comprehensive State-wide Water Management Planning, wetlands programs, estuary and coastal programs, public health and aquatic life issues, water protection programs, groundwater and surface water supplies, and major issues and challenges affecting water resources.

D. TMDL Implementation Plans

All assessed waters whose data indicate that at least one designated use is not being met and that TMDL(s) need to be completed for one or more pollutants are required to have TMDL Implementation Plans developed. These plans are used as a platform to facilitate corrective management strategies. These strategies vary depending on the pollutant of concern and severity of the problem. For point sources, NPDES issuance or re-issuance is performed by EPD in coordination with local governments and industries. For nonpoint sources of pollution TMDL

Georgia Environmental Protection Division
 Middle Chattahoochee Water Council
Existing Regulatory and Local Plan Summary

Implementation Plans are conducted through the development of Tier 3 and Tier 2 plans. These tiers are summarized in Table I-1.

Table I-1. TMDL Implementation Plan Development for Nonpoint Sources	
Tier 3	Tier 2
Developed by EPD	Developed by Regional Development Centers (RDCs) and other public contractors
Applicability:	Applicability:
Waters “partially impaired” due to fecal coliform	Instituting and/or continuing local water quality protection and restoration programs
Waters “impaired” due to natural conditions	
Waters with fish consumption advisories	Public outreach coordination
Waters with legacy sediment	
Waters where TMDL models estimate a zero percent load reduction is necessary to achieve standards	Local stakeholder collaboration, planning, and implementation

TMDL Implementation Plans include background information on monitoring activities, information on the pollutant of concern, potential sources of contamination, land use, implementation actions, monitoring plans, and planned outreach activities. Implementation actions may include wasteload allocation changes to existing NPDES permit holders or setting new NPDES permits to unpermitted sites or facilities.

E. Nonpoint Source Management Plans and Programs

The Nonpoint Source Management Program administered by the EPD provides regulatory and non-regulatory approaches to nonpoint source pollution abatement. Implementation of the program is achieved through collaboration with state and federal agencies, local and regional governments, state colleges and universities, businesses and industries, non-governmental organizations, and individual citizens.

Program specific approaches for agriculture, sivilculture, and rural/urban nonpoint source pollution are implemented by different state agency leads other than EPD. The agencies and their programs are summarized in Table I-2.

Georgia Environmental Protection Division
 Middle Chattahoochee Water Council
Existing Regulatory and Local Plan Summary

Table I-2. Nonpoint Source Management Program		
Sector	Lead Agency	Program Highlights
Agriculture	Georgia Soil and Water Conservation Commission (GWSCC)	<ul style="list-style-type: none"> • Non-regulatory • Voluntarily installed BMPs • Erosion and sediment control • Streambank restoration • Interagency support includes technical resources and financial resources for priority watersheds • Additional funding and assistance from Federal Farm Bill and NRCS programs
Sivilculture	Georgia Forestry Commission (GFC)	<ul style="list-style-type: none"> • Non-regulatory • Voluntarily installed BMPs • Erosion and sediment control • Streambank restoration • Wetlands delineation • Community assistance program • Biennial Statewide BMP Compliance Survey conducted
Urban/Rural	Department of Community Affairs (DCA)	<ul style="list-style-type: none"> • Multiple targets for management practice implementation from site specific, system-wide, river corridors, and watersheds • Comprehensive watershed management • Water Resources Toolkit • Urban nonpoint management driven in part by TMDLs • <i>Georgia Stormwater Management Manual – Volume 1</i> and <i>Georgia Stormwater Policy Guide – Volume 2</i> (ARC, EPD 2001) • Georgia Project WET and Georgia Adopt-A-Stream Program

Georgia Environmental Protection Division
Middle Chattahoochee Water Council
Existing Regulatory and Local Plan Summary

A major financial driver behind implementation of the nonpoint source programs are federal monies allocated to the states under Section 319(h) of the Clean Water Act. Through these funds grants can be awarded by EPD directly to local governments or to the GWSCC, GFC, Regional Development Council's (RDCs), Resource Conservation and Development Councils (RC&Ds), and Universities who award and oversee 319(h) grants within their respective areas. Grantees are responsible for analysis of nonpoint source pollution problems within their jurisdictions and the design of an implementation plan employing innovative methods and practices to protect and improve water quality. Grant awardees are responsible for full implementation of the program and a 40 percent cost share with the state. Follow-up monitoring and load reduction reporting are submitted to the state upon project completion to gauge effectiveness.

F. Local Comprehensive Plans

The Georgia Department of Community Affairs (DCA) administers the rules promulgated by the Georgia Planning Act of 1989, which require all counties and cities within the state to develop comprehensive plans. The plans must provide 20 year forecasts of expected activities. The "Minimum Planning Standards" per Chapter 391-3-16 of the Georgia Rules and Regulations, require those plans to establish protection measures for the water resources within the given jurisdictional boundary. The rules specifically provide guidance for water supply watersheds, groundwater recharge areas, wetlands protection, river corridor protection, and mountain protection.

City and county roles and responsibilities for water supply and wastewater services are established via the Service Delivery Strategy Act and must be coordinated with the comprehensive plans. Service Delivery Strategies are defined as the "intergovernmental arrangement among city governments, the county government, and other affected entities within the same county for delivery of community services..." per Chapter 110-12-1 of the DCA rules. Water related services are provided by the city, county, or both per negotiated agreements under the Act.

It is noted that water and sewer master plans are not necessary per the rules and regulations as a stand-alone document. In many cases however, the development of such master plans are required as part of a discharge permit condition. This is particularly the case in large urban areas.

Georgia Environmental Protection Division
Middle Chattahoochee Water Council
Existing Regulatory and Local Plan Summary

G. Stormwater Management Plans

Similar to water and sewer master planning, stormwater management planning should be included within local comprehensive planning efforts. The local provider(s) of stormwater system services should be identified per the Service Delivery Strategy Act within individual counties.

Municipal separate storm sewer systems (MS4) that discharge into surface waters are required to have a permit under the Clean Water Act. The U.S. Environmental Protection Agency (EPA) NPDES stormwater regulations have established two phases (Phase I and Phase II) for the municipal stormwater permit program. Phase I communities have individual permits and discharge limitations whereas Phase II communities are covered under a general permit requiring implementation of BMPs in lieu of monitoring. MS4 permit holders are required to submit annual Stormwater Management Plans (SWMP) to the EPD.

In addition to municipalities, the Phase I federal regulations include general permit conditions for 11 industrial subcategories. EPD issued a corresponding NPDES General Permit No. GAR000000 that regulates stormwater discharge for 10 industrial categories.

Georgia Environmental Protection Division
 Middle Chattahoochee Water Council
Existing Regulatory and Local Plan Summary

II. Findings

A. Watershed Assessments and Watershed Protection Plans

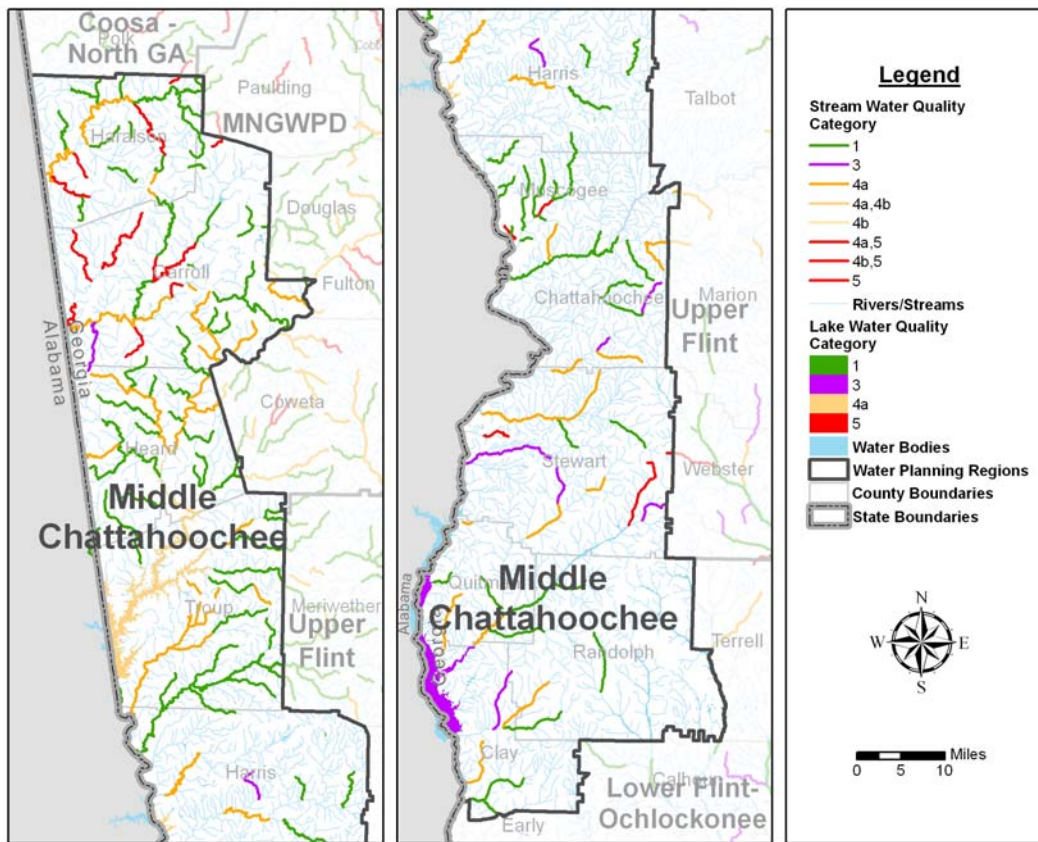
Several cities and counties within the planning region have recently completed or are in the process of developing a Watershed Monitoring Plan (WMP), Watershed Assessment (WA), and Watershed Protection Plan (WPP). A summary of ongoing assessments as provided by EPD is presented in Table II-1.

Table II-1. Ongoing Watershed Assessments and Protection Plans					
City -or- County	NPDES Permit No.	Basin	WMP	WA	WPP
Carroll County			x		
Carrollton			x		
Villa Rica	GA0027171	Chattahoochee	x	x	
West Georgia		Chattahoochee	x	x	x
Chattahoochee County - Cussetta		Chattahoochee	x		
Temple	GA02-134	Tallapoosa	x	x	x
West Point	GA0020052	Chattahoochee	x	x	x
West Georgia		Chattahoochee	x	x	
Columbus		Chattahoochee	x	x	x
Paulding Co - Georgian Resorts	GA02-004	Coosa/Chattahoochee	x	x	
Georgetown		Chattahoochee	x	x	x
LaGrange	GA0036851	Chattahoochee	x	x	

B. Water Quality in Georgia 2006-2007 (305(b)/303(d) Report)

The 305(b)/303(d) list provides assessed waters by major watershed and assigns a categorical value to determine whether or not the water is meeting water quality standards to support its prescribed use classification. The 305(b)/303(d) assessment categories and segments and lakes within the Middle Chattahoochee Water Planning Region which have been categorized are summarized in Figure II-1. The 305(b)/303(d) list has been reduced to those stream segments and lakes within the Middle Chattahoochee Water Planning Region and is summarized in an Attachment to this technical memorandum in Tables A-1 and A-2.

Georgia Environmental Protection Division
 Middle Chattahoochee Water Council
Existing Regulatory and Local Plan Summary



Category Definitions:

- 1 – Waters meeting designated use(s).
- 2 – Waters having more than 1 designated use and data indicate at least one is being met, but there is insufficient evidence to determine that all uses are being met.
- 3 – Insufficient data or other information to make a determination as to whether or not the designated use(s) is being met
- 4a – Data indicate that at least one designated use is not being met, but TMDL(s) have been completed for the parameter(s) that are causing impairment
- 4b – Data indicate that at least one designated use is not being met, but there are actions in place (other than a TMDL) that are predicted to lead to compliance with water quality standards.
- 4c – Data indicate that one designated use is not being met, but the impairment is not caused by a pollutant.
- 5 – Data indicates that at least one designated use is not being met and TMDL(s) need to be completed for one or more pollutants.

River Basin	Total River Miles Impaired in the Middle Chattahoochee Region				Total
Chattahoochee	2	220	2	174	314
Flint	0	0	0	7	7
Tallapoosa	0	84	10	63	120
Criterion Violated	DO	Fecal Coliforms	Metal	Other	Regional Total = 441 miles

Note: Stream reaches may have more than one criterion violated, i.e. the sum of DO, Fecal Coliforms, Metals, and Other may be greater than the total number of stream miles listed as impaired. Metals includes mercury trophic-weighted residue value and fish consumptive guidance.

Figure II-1. Listed Stream Segments in the Middle Chattahoochee Region

Georgia Environmental Protection Division
Middle Chattahoochee Water Council
Existing Regulatory and Local Plan Summary

C. TMDL Implementation Plans

TMDL implementation plans for stream reaches and lakes within the Middle Chattahoochee Planning Region are summarized in Table A-1. The pollutant criterion violated and potential cause codes as defined by EPD are provided in the table along with the year which the plan was adopted. These listed waters correspond to assessment category 4a stream reaches as is defined in Figure II-1. EPD continues to monitor and assess these impaired waters per their respective plans. Future permitting within watersheds having impaired waters will continue to be reassessed as additional information becomes available. All TMDL Implementation Plans are available through the following EPD website: http://www.gaepd.org/Documents/TMDL_page.html.

D. Nonpoint Source Management Plans and Programs

Best management practice programs and oversight are in place regarding water quality protection in the region and the state by the Georgia Forestry Commission (GFC) in cooperation with EPD. The GFC investigates water quality complaints and works with landowners, timber buyers, and loggers to correct any problems. In cases where the GFC cannot get satisfactory compliance, the case is turned over to EPD for enforcement. In addition the GFC conducts a biennial statewide Best management Practice (BMP) compliance survey. The GFC conducts field surveys and documents compliance with implementation of BMPs. In 2009, the GFC completed a standardized survey at 221 sites totaling 27,000 acres. The number of acres with BMP compliances was 99.7%. This effort provides the forestry industry with documentation of BMP compliance.

Several active Section 319(h) projects fall within the region or are statewide initiatives. These projects are summarized in Table II-2. On August 16, 2010, EPD issued a memorandum to the regional councils to inform them that recommended nonpoint source pollution management practices identified in the regional water plans could be considered for 319(h) funding if the council opts to take advantage of that opportunity. The Middle Chattahoochee Council issued a letter of support to Georgia EPD on February 25, 2011 regarding the Section 319(h) grant proposal submitted by the Rolling Hills Resource Conservation & Development Council for the Middle Chattahoochee Water Planning Council Area. The Council supports this grant proposal for the project titled "Addressing Non-point Source Pollution Issues in the Middle Chattahoochee Water Planning Council Area" submitted. The letter of support and grant application are appended to this technical memorandum. The Middle Chattahoochee Council

Georgia Environmental Protection Division
 Middle Chattahoochee Water Council
Existing Regulatory and Local Plan Summary

intends to continue working with EPD in adopting this 319(h) project into the Middle Chattahoochee Regional Water Plan.

Table II-2. Nonpoint Source Management Plans/Programs		
Plan/Program Name	Lead Agency	Description
Silvicultural Nonpoint Source Management Program	Georgia Forestry Commission	Statewide effort to assess the use of BMPs within the Forestry community
Georgia Stormwater Management Manual - Volume 3	Atlanta Regional Commission	Volume 3 will identify "goodhouse keeping" measures to control and reduce nonpoint source pollution from stormwater. These measures will be for use Statewide
Demonstrating the Benefits of Portable Timber Bridges for Forest Road Stream Crossings	Pine Country RC&D Council	BMP demonstration project / forestry
Better Back Roads Sediment Reduction Project	Two Rivers RC&D Council	Project is using practices from the Better Back Roads Manual to address unpaved roads as sources of sediment
Georgia Better Back Roads Manual	Pine Country RC&D Council	Nonpoint source tool development
TMDL Implementation in the Lower Little Tallapoosa	Rolling Hills RC&D Council	Project will implement multiple types of ag. BMPs as well as address septic tank issues. BMPs will be based on recommendations from previously completed watershed plans.
Poultry Waste Management TMDL Implementation and Demonstration	Rolling Hills RC&D Council	BMP demonstration project / agriculture

E. Local Comprehensive Plans

The Georgia Department of Community Affairs maintains all local comprehensive plans determined to be compliant with the Local Planning Requirements. Approved plans falling with the Middle Chattahoochee Region and reviewed by the Middle Chattahoochee Council for consistency with the Middle Chattahoochee Regional Water Plan are summarized in Table II-3.

Georgia Environmental Protection Division
 Middle Chattahoochee Water Council
Existing Regulatory and Local Plan Summary

Table II-3. DCA Approved Local Government Plan Survey			
County	City/Towns	Comprehensive Plan	Community Assessment
Carroll	-		x
	Temple	x	
	Roopville	x	
	Mount Zion		x
	Whitesburg	x	
	Bowdon		x
	Carrollton		x
	Villa Rica	x	
Chattahoochee	Unified Government		x
	Cusseta		
Clay	-		x
	Fort Gaines		
	Bluffton		
Haralson	-		x
	Buchanan		
	Tallapoosa		
	Waco		
	Bremen		
Harris	-		x
	Pine Mountain		
	Hamilton		
	Shiloh		
	Waverly Hall		
Heard	-	x	
	Ephesus		
	Centralhatchee		
	Franklin		
Muscogee	Unified Government		x
	Columbus		
Quitman	Consolidated Government	x	

Georgia Environmental Protection Division
 Middle Chattahoochee Water Council
Existing Regulatory and Local Plan Summary

Table II-3. DCA Approved Local Government Plan Survey			
County	City/Towns	Comprehensive Plan	Community Assessment
	Georgetown		
Randolph	-	x	
	Cuthbert		
	Shellman		
	Coleman		
Stewart	-		x
	Lumpkin		
	Richland		
Troup	-	x	
	Hogansville		
	LaGrange		
	West Point		

Additional plans provided to the Council were also reviewed and where applicable used to frame the selection of management practices. When possible, successful management practices already planned for and/or in use in the Region formed the basis for the water management practices selected by the Council. These plans were also used to refine water and wastewater forecasting when necessary. A summary of planning reports and documents submitted directly by Council members for consideration is provided in Table II-4.

Table II-4. Additional Plans Considered When Selecting Management Practices	
<i>Plan Type or Specific Title</i>	Water Supply Needs Assessment Carroll County, Georgia
<i>Regional Resource(s) Impacted (Watershed/Aquifer)</i>	Little Tallapoosa and Chattahoochee river basins
<i>Organization or Entity Associated With Plan</i>	All major water providers in Carroll County (Carroll County Water Authority, cities of Carrollton, Villa Rica, Bowdon, Temple, Roopville, Whitesburg, and Mt. Zion)
<i>Date of Plan</i>	November 20, 2008

Georgia Environmental Protection Division
 Middle Chattahoochee Water Council
Existing Regulatory and Local Plan Summary

Table II-4. Additional Plans Considered When Selecting Management Practices

<i>Description of Relevant Plan Content (i.e. Practices currently planned for and/or in use in the Region to form the basis for the Council's selected water management practices)</i>	Current and projected water use and population data for the water providers within Carroll County
--	---

<i>Plan Type or Specific Title</i>	Columbus Water Works 2007 Facilities Master Plan Update
<i>Regional Resource(s) Impacted (Watershed/Aquifer)</i>	Chattahoochee River Basin
<i>Organization or Entity Associated With Plan</i>	Columbus Water Works
<i>Date of Plan</i>	July 2008
<i>Description of Relevant Plan Content (i.e. Practices currently planned for and/or in use in the Region to form the basis for the Council's selected water management practices)</i>	Current and projected water use and wastewater estimates (including transient demand for Ft. Benning and wholesale water demands) and current and future infrastructure requirements

<i>Plan Type or Specific Title</i>	Strategic Plan for Sustainable Development in Troup County, Georgia
<i>Regional Resource(s) Impacted (Watershed/Aquifer)</i>	Chattahoochee River Basin
<i>Organization or Entity Associated With Plan</i>	Troup County and the cities of LaGrange, West Point, and Hogansville
<i>Date of Plan</i>	2008
<i>Description of Relevant Plan Content (i.e. Practices currently planned for and/or in use in the Region to form the basis for the Council's selected water management practices)</i>	Relevant goals established for strategic and sustainable growth include: protect environmentally sensitive lands, while simultaneously using the approach to connect people to schools, recreational and entertainment opportunities, and each other and work to develop county and city collaborative policies and procedures to protect water quality throughout the county

<i>Plan Type or Specific Title</i>	Economic Impact of West Point Lake At Various Lake Water Levels
<i>Regional Resource(s) Impacted (Watershed/Aquifer)</i>	West Point Lake

Georgia Environmental Protection Division
 Middle Chattahoochee Water Council
Existing Regulatory and Local Plan Summary

Table II-4. Additional Plans Considered When Selecting Management Practices	
<i>Organization or Entity Associated With Plan</i>	City of LaGrange, Georgia and local stakeholders
<i>Date of Plan</i>	December 15, 2007
<i>Description of Relevant Plan Content (i.e. Practices currently planned for and/or in use in the Region to form the basis for the Council’s selected water management practices)</i>	Study demonstrating impacts that low lake levels at West Point Lake have had on the regional economy as a result of U.S. Army Corps of Engineers management of reservoir levels in recent years

<i>Plan Type or Specific Title</i>	A Comprehensive Wildlife Conservation Strategy for Georgia
<i>Regional Resource(s) Impacted (Watershed/Aquifer)</i>	Multiple regional surface waters
<i>Organization or Entity Associated With Plan</i>	Georgia Department of Natural Resources – Wildlife Resources Division
<i>Date of Plan</i>	August, 31, 2005
<i>Description of Relevant Plan Content (i.e. Practices currently planned for and/or in use in the Region to form the basis for the Council’s selected water management practices)</i>	Emphasizes the conservation of “Georgia’s animals, plants, and natural habitats through proactive measures emphasizing voluntary and incentive-based programs on private lands, habitat restoration and management by public agencies and private conservation organizations, rare species survey and recovery efforts, and environmental education and public outreach activities.” A summary of aquatic species which are currently under state or federal protection and a list of high priority waters specific to the Middle Chattahoochee region identified by the Wildlife Resources Division are appended to this document.

F. Stormwater Management Plans

A survey of existing permitted municipal separate stormwater systems (MS4) within the planning region has been performed. Each local and/or county government or jurisdiction with a MS4 NDES permit is responsible for submitting an annual stormwater management plan to EPD. Permitted MS4 discharges within the planning region are presented in Table III-5.

Georgia Environmental Protection Division
 Middle Chattahoochee Water Council
Existing Regulatory and Local Plan Summary

Table II-5. Permitted Municipal Separate Stormwater Systems (MS4) in the Middle Chattahoochee Region	
Phase I Permits (individual permits and discharge limitations)	Phase II Permits (general permit holders requiring implementation of BMPs in lieu of monitoring)
Columbus-Muscogee County	None

A survey of existing regulated stormwater discharges within the planning region has also been performed. Each discharger is responsible for submitting an annual stormwater management plan to EPD. Regulated stormwater discharges within the planning region are presented in Table II-6.

Table II-6. Permitted Industrial Stormwater Discharges		
NOI #	Facility	City
Haralson County		
01070	PREFERRED RUBBER COMPOUNDING PLANT #2 AND #3	TALLAPOOSA
01072	PREFERRED RUBBER COMPOUNDING PLANT #1	TALLAPOOSA
04412	DIAMOND CRYSTAL BRANDS, BREMEN	BREMEN
01630	WAYNE DAVIS CONCRETE COMPANY	TALLAPOOSA
04191	ROBBINS LLC	TALLAPOOSA
00042	VENUS THREAD, INC.	TALLAPOOSA
02976	BREMEN CONCRETE PLANT	BREMEN
01923	BALL AEROSOL & SPECIALTY CONTAINER, INC	TALLAPOOSA
04494	NCI BUILDING SYSTEMS, L.P.	TALLAPOOSA
04214	APAC BALLENGER TALLAPOOSA CONCRETE PLANT	TALLAPOOSA
10584	HONDA PRECISION PARTS OF GEORGIA	TALLAPOOSA
02634	PILGRIM'S PRIDE FEED MILL	WACO
04529	HL-A CO.	BREMEN
01328	BREMEN TERMINAL	BREMEN
Carroll County		
01510	E & C CHEMICALS, INC.	CARROLLTON
02102	PRINTPACK, INC.	VILLA RICA
10497	SUPERIOR INTERNATIONAL INDUSTRIES	CARROLLTON
02501	FLOWERS BAKING COMPANY OF VILA RICA, INC.	VILLA RICA
04119	DECOSTAR INDUSTRIES	CARROLLTON
00353	SOUTHWIRE COPPER DIVISION	CARROLLTON

Georgia Environmental Protection Division
 Middle Chattahoochee Water Council
Existing Regulatory and Local Plan Summary

Table II-6. Permitted Industrial Stormwater Discharges		
NOI #	Facility	City
04118	CARROLLTON LAS	CARROLLTON
10072	MARY ANN IND	VILLA RICA
02150	CARROLLTON BLOCK	CARROLLTON
10056	READY MIX USA	VILLA RICA
02645	INTEX, A BOLLAG INTL CO	VILLA RICA
02481	AIRGAS MERCHANT GASES	CARROLLTON
03915	C. W. MATHEWS CONTRACTING	VILLA RICA
01631	WAYNE DAVIS CONCRETE COMPANY	VILLA RICA
03853	MCNEILUS TRUCK & MANUFACTURING DIVISION	VILA RICA
00322	HOUGHTON INTERNATIONAL, INC.	CARROLLTON
10070	MARY ANN IND	VILLA RICA
00351	SOUTHWIRE COMPANY - WIRE MILLS	CARROLLTON
10071	MARY ANN IND	VILLA RICA
00350	SOUTHWIRE COMPANY - MACHINERY DIVISION	CARROLLTON
10506	PLAYLAND INTERNATIONAL	CARROLLTON
10064	MCINTYRE LUMBER CO	BOWDON
03019	OFS BRIGHTWAVE	CARROLLTON
10018	CITY OF CARROLLTON - SPRAY FIELD	CARROLLTON
10542	VILLA RICA BINS	VILLA RICA
0540	SLM RECYCLING, INC.	CARROLLTON
03370	CARLISLE TIRE	BOWDON
02433	MCNEILUS TRUCK & MANUFACTURING, INC.	VILLA RICA
10019	INGERSOL RAND ATTACHMENTS	CARROLLTON
10017	CITY OF CARROLLTON - BELT PRESS	CARROLLTON
00846	PILGRIM'S PRIDE PROCESSING PLANT	CARROLLTON
04516	CITY OF TEMPLE LAS	TEMPLE
00712	WAYNE DAVIS CONCRETE COMPANY	CARROLLTON
03416	FULGHUM FIBRES, INC.	WHITESBURG
00757	UNITED PARCEL SERVICE, INC.	CARROLLTON
10181	VULCAN QUARRY	VILLA RICA
Heard County		
04314	HEARD COUNTY QUARRY	FRANKLIN
02988	PLANT WANSLEY - GEORGIA POWER	ROOPVILLE

Georgia Environmental Protection Division
 Middle Chattahoochee Water Council
Existing Regulatory and Local Plan Summary

Table II-6. Permitted Industrial Stormwater Discharges		
NOI #	Facility	City
00964	FRANKLIN ALUMINUM COMPANY	FRANKLIN
Troup County		
04394	LONG CANE CREEK WPCP	LAGRANGE
00282	LAGRANGE BLOCK PLANT	LAGRANGE
00498	ATLAS ROOFING CORPORATION	LAGRANGE
04545	INDUSTRIAL SPECIALTY FABRICS	HOGANSVILLE
03431	KLEEN-TEX INDUSTRIES, INC. PLANTS 2 & 3	LAGRANGE
00614	DURACELL - NORTH ATLANTA GROUP	LAGRANGE
00283	LAGRANGE CONCRETE PLANT	LAGRANGE
03213	UNITY PLANT (MILLIKEN & COMPANY)	LAGRANGE
01232	CW MATTHEWS ASPHALT PLANT NO 34	LAGRANGE
02467	READY MIX USA, LLC - LAGRANGE	LAGRANGE
04268	WAL-MART REGIONAL DISTRIBUTION CENTER #6054	LAGRANGE
04298	KLEEN-TEX INDUSTRIES, INC. PLANT 4	LAGRANGE
01335	MILLIKEN & COMPANY - PINE MOUNTAIN PLANT	PINE MOUNTAIN
02142	WHEELABRATOR GROUP - LAGRANGE PLANT	LAGRANGE
00994	MOBIL CHEMICAL COMPANY	LAGRANGE
01572	INTERFACE FLOR KYLE 3	LAGRANGE
10624	READY MIX USA, LLC - COUCH-KIA PLANT	WEST POINT
10639	MIDDLE GEORGIA CONCRETE INC	HOGANSVILLE
01227	RAY C. ANDERSON PLANT	WEST POINT
01058	KEX I PLANT (MILLIKEN & COMPANY)	LAGRANGE
01073	DUNCAN M. STEWART/ KEX II	LAGRANGE
01226	INTERFACE FLOR KYLE 1 & 2	LAGRANGE
02575	HENKEL CONSUMER ADHESIVES	LAGRANGE
04316	LAGRANGE QUARRY	LAGRANGE
02326	FREUDENBERG - NOK GENERAL PARTNERSHIP	LAGRANGE
04233	BO-TEX SALES	HOGANSVILLE
02820	CATERPILLAR, INC.	LAGRANGE
00751	UPS - LAGRANGE	LAGRANGE
03960	GUARDIAN LAGRANGE MOULDING	LAGRANGE
01747	MILLIKEN & COMPANY - HILLSIDE/VALWAY PLANT	LAGRANGE

Georgia Environmental Protection Division
 Middle Chattahoochee Water Council
Existing Regulatory and Local Plan Summary

Table II-6. Permitted Industrial Stormwater Discharges		
NOI #	Facility	City
10599	LAGRANGE BIN	LAGRANGE
02919	FEDEX EXPRESS LGCA	LAGRANGE
01559	LAGRANGE SANITARY LANDFILL	LAGRANGE
02859	SAFA, LLC	LAGRANGE
00853	MILLIKEN & COMPANY - ELM CITY PLANT	LAGRANGE
00901	MILLIKEN & COMPANY LIVE OAK PLANT	LAGRANGE
01890	LAGRANGE MOLDED PRODUCTS	LAGRANGE
02789	EMERSON NETWORK POWER	LAGRANGE
Harris County		
04558	OMEGA STORE PRODUCTS INC	FORSTON
04384	CAGLE'S INC.	PINE MOUNTAIN VALLEY
04556	XPRESS MATERIALS	WEST POINT
02581	LAFARGE AGGREGATES SE - COLUMBUS QUARRY	MIDLAND
04564	RODGERS METAL CRAFT	FORSTON
Muscogee County		
01087	SOUTHEASTERN FREIGHT LINES, INC.	COLUMBUS
04402	SHERMAN INDUSTRIES, INC.	FORTSON
02551	CESSNA AIRCRAFT	COLUMBUS
02548	HEXION SPECIALTY CHEMICALS	COLUMBUS
04216	TEXPAR ENERGY COLUMBUS TRANSFER	COLUMBUS
00284	READY MIX USA, LLC - MILLER ROAD	COLUMBUS
04439	MORRIS ROAD AUTO PARTS	COLUMBUS
00106	DRYVIT SYSTEMS, INC.	COLUMBUS
00968	KEMIRA CHEMICALS, INC. COLUMBUS PLANT	COLUMBUS
02520	FLORIDA ROCK & TANK LINES, INC.	COLUMBUS
01122	READY MIX USA, LLC - COLUMBUS DOWNTOWN	COLUMBUS
00091	COLUMBUS METROPOLITAN AIRPORT	COLUMBUS
02449	UPS - COLUMBUS	COLUMBUS
03151	COLUMBUS QUARRY	COLUMBUS
02787	VEOLIA ENVTL SERVICES COLUMBUS TRANSFER & HAULING	COLUMBUS

Georgia Environmental Protection Division
 Middle Chattahoochee Water Council
Existing Regulatory and Local Plan Summary

Table II-6. Permitted Industrial Stormwater Discharges		
NOI #	Facility	City
00791	NORFOLK SOUTHERN RAILWAY CO. - COLUMBUS YARD	COLUMBUS
00221	INTERSTATE BRANDS CORP. - DOLLY MADISON BAKERY	COLUMBUS
04021	CON WAY SOUTHERN EXPRESS - NCB	COLUMBUS
04025	COVALENCE PLASTICS	COLUMBUS
04026	PINE GROVE LANDFILL	COLUMBUS
10643	JT KNIGHT & SONS, INC	COLUMBUS
00905	KEEBLER COMPANY	COLUMBUS
02614	WEYERHAEUSER COMPANY	COLUMBUS
03030	KYSOR WARREN SYSTEM'S PLANT	COLUMBUS
03038	FEDEX EXPRESS CSGA	COLUMBUS
04204	VALLEY SAND AND NURSERY	COLUMBUS
04453	SOUTH COLUMBUS WRF, RECLAMATION SITE & OXBOW MEADO	COLUMBUS
04219	CARAUSTAR RECOVERED FIBER - COLUMBUS RECYCLING PLA	COLUMBUS
04445	ROGERS CARTAGE COMPANY	FORTSON
10604	COLUMBUS BIN	COLUMBUS
00416	KYSOR/ WARREN CASE PLANT	COLUMBUS
04429	SUNFRESH BEVERAGES	COLUMBUS
04487	APAC - COLUMBUS ASPHALT PLANT	FORTSON
01384	INTERMET COLUMBUS FOUNDRY, L.P.	COLUMBUS
02123	HANSON PIPE & PRECAST SOUTHEAST	COLUMBUS
03212	SWIFT SPINNING MILLS, INC.	COLUMBUS
04424	COLUMBUS CONCRETE PLANT	COLUMBUS
10631	CW MATTHEWS PLANT NO 34-COLUMBUS	MIDLAND
04566	ONEDA CORPORATION	COLUMBUS
01330	COLUMBUS TERMINAL	COLUMBUS
01274	SAFETY - KLEEN CORPORATION	COLUMBUS
03356	EXIDE TECHNOLOGIES	COLUMBUS
04472	READY MIX USA LLC SMITH ROAD	COLUMBUS
01158	AAA COOPER TRANSPORTATION	COLUMBUS

Georgia Environmental Protection Division
 Middle Chattahoochee Water Council
Existing Regulatory and Local Plan Summary

Table II-6. Permitted Industrial Stormwater Discharges		
NOI #	Facility	City
03268	READY MIX USA, LLC - COLUMBUS PLANT	COLUMBUS
04306	COLUMBUS QUARRY, LLC FLORIDA ROCK IND.	FORTSON
04317	BARIN QUARRY	FORTSON
10647	J.A. LONG CONCRETE BATCH PLANT	COLUMBUS
03257	EASTMAN KODAK COMPANY	COLUMBUS
02320	WAGGONERS TRUCKING	COLUMBUS
02281	PRATT & WHITNEY	MIDLAND
01837	PEACH STATE LABS, INCE	COLUMBUS
04221	UNITED STATES ARMY INFANTRY SCHOOL	FORT BENNING
Chattahoochee County		
10447	PUBLIC WORKS, UNIFIED GOV'T OF CUSSETA	CUSSETA
Stewart County		
04193	OXFORD CONSTRUCTION COMP. APHALT PLANT 3	LUMPKIN
Randolph County		
00402	AMERICAN PROTEINS/CUTHBERT DIVISION	CUTHBERT

G. Georgia Association of Regional Commissions – Review of Local Comprehensive Plans & Water Resource Best Management Practices

A review of local comprehensive plans and water resources best management practices provided by the River Valley and Three Rivers regional commissions was also used to assist the Council in framing management practice selection. The regional commissions established throughout the state help develop and promote comprehensive planning to sustainably develop regional economies while meeting the minimum planning standards established in Chapter 391-3-16 of the Georgia Rules and Regulations.

Lists of best management practices established in existing local plans as provided by the River Valley and Three Rivers regional commissions is provided as an Attachment to this technical memorandum in tables A-3 and A-4, respectively.

Georgia Environmental Protection Division
Middle Chattahoochee Water Council
Existing Regulatory and Local Plan Summary

III. ATTACHMENTS

Tables and attachments as previously described are attached to this technical memorandum in the pages that follow. The tables include the following:

- Table A-1. 305(b)/303(d) Listed Streams
- Table A-2. 305(b)/303(d) Listed Lakes
- Table A-3. River Valley Regional Commission – Review of Local Comprehensive Plans, Water Resource BMPs
- Table A-4. Three Rivers Regional Commission – Review of Local Comprehensive Plans, Water Resource BMPs
- Table A-5, State and Federally Protected Aquatic Species Specific to the Middle Chattahoochee Water Planning Region
- Table A-6, High Priority Waters for Protecting Aquatic Biodiversity in the Middle Chattahoochee Water Planning Region
- Middle Chattahoochee Council Letter of Support for 319(h) Addressing Non-point Source Pollution Issues in the Middle Chattahoochee Water Planning Council Area
 - Section 319(h) Grant Application

Georgia Environmental Protection Division
 Middle Chattahoochee Water Council
Existing Regulatory and Local Plan Summary

Table A-I. 305(b)/303(d) Listed Streams										
<i>Stream Data</i>					<i>305(b)/303(d) & TMDL Data</i>					
HUC 12	Reach Name	County	Location Description	Stream Extension (miles)	303(b)/303(d) Assessment Category	Criterion Violated ¹	Potential Cause Code ²	Water Use	Evaluation	TMDL Implementation Plan -OR- Priority Year
Chattahoochee River Basin										
031300020211	Town Branch	Carroll/Douglas	Villa Rica	1	1	-	-	Fishing	Supporting	-
031300020302	Hurricane Creek	Douglas/Carroll	Douglas/Carroll Counties	7	1	-	-	Fishing	Supporting	-
031300020307	Little Snake Creek	Carroll	Carroll County	4	1	-	-	Fishing	Supporting	-
031300020314	Sandy Creek	Carroll	Carroll County	3	1	-	-	Fishing	Supporting	-
031300020316	Snake Creek	Carroll	U/S Chattahoochee River	12	1	-	-	Fishing	Supporting	-
031300020321	Wolf Creek	Douglas/Carroll	Headwaters to Chattahoochee River	10	4a	FC	NP	Fishing	Not Supporting	2001
031300020322	Box Springs Creek	Carroll	Carroll County	5	1	-	-	Fishing	Supporting	-
031300020325	Crews Creek	Carroll	Carroll County	5	1	-	-	Fishing	Supporting	-
031300020401	Acorn Creek	Carroll	Carroll County	5	4a	FC	NP	Fishing	Not Supporting	2001
031300020402	Gum Creek	Carroll/ Heard	Headwaters to Centralhatchee Creek	6	1	-	-	Fishing	Supporting	-
031300020403	Harris Creek	Heard	Heard County	6	1	-	-	Fishing	Supporting	-
031300020404	Hilly Mill Creek	Heard/ Coweta	Heard/Coweta Counties	6	4a	FC, Bio F	NP	Fishing	Not Supporting	2004
031300020405	Little Taylor Creek	Heard	Heard County	4	1	-	-	Fishing	Supporting	-
031300020407	Nutt Creek	Heard	Heard County	3	1	-	-	Fishing	Supporting	-
031300020409	Pink Creek	Heard	Heard County	3	1	-	-	Fishing	Supporting	-
031300020414	Whooping Creek	Carroll	Headwaters to Chattahoochee River	13	4a	FC	NP	Fishing	Not Supporting	2001
031300020415	Yellowdirt Creek	Carroll	Headwaters to water storage reservoir	5	1	-	-	Fishing	Supporting	-
031300020417	Caney Creek	Carroll	Carroll County	5	1	-	-	Fishing	Supporting	-
031300020418	Carthbody Creek	Carroll	Carroll County	3	1	-	-	Fishing	Supporting	-
031300020419	Cavender Creek	Carroll	Carroll County	2	4a	Bio F	NP	Fishing	Not Supporting	2004
031300020421	Centralhatchee Creek	Heard	Heard County	19	4a	FC	NP	Fishing	Not Supporting	2001
031300020422	Deer Creek	Heard	Heard County	10	1	-	-	Fishing	Supporting	-
031300020423	Dukes Creek	Heard	Heard County	3	1	-	-	Fishing	Supporting	-

Georgia Environmental Protection Division
 Middle Chattahoochee Water Council
Existing Regulatory and Local Plan Summary

Table A-I. 305(b)/303(d) Listed Streams										
<i>Stream Data</i>					<i>305(b)/303(d) & TMDL Data</i>					
HUC 12	Reach Name	County	Location Description	Stream Extension (miles)	303(b)/303(d) Assessment Category	Criterion Violated ¹	Potential Cause Code ²	Water Use	Evaluation	TMDL Implementation Plan -OR- Priority Year
031300020424	Chattahoochee River	Coweta/ Carroll/ Heard	Wahoo Creek to Franklin	21	4a	FC, FCG(PCBs)	UR	Fishing	Not Supporting	2004
031300020425	Chattahoochee River	Fulton/ Douglas/ Coweta/ Carroll	Pea Creek to Wahoo Creek	21	4a	FC, FCG(PCBs)	UR	Fishing	Not Supporting	2004
031300020501	Fromby Creek	Heard	Heard County	3	1	-	-	Fishing	Supporting	-
031300020509	New River	Heard/ Coweta	Heard/Coweta Counties	24	1	-	-	Fishing	Supporting	-
031300020510	Redbud Creek	Heard	Heard County	5	1	-	-	Fishing	Supporting	-
031300020512	Caney Creek	Heard/ Coweta	Heard/Coweta Counties	10	1	-	-	Fishing	Supporting	-
031300020601	Hillabahatchee Creek	Heard	Tollieson Branch to Glovers Road	6	1	-	-	Fishing	Supporting	-
031300020602	Hillabahatchee Creek	Heard	Headwaters to Tollieson Branch, Franklin	16	1	-	-	Fishing	Supporting	-
031300020603	Town Creek	Heard	Headwaters to Little Creek	6	4a	Bio F	NP	Fishing	Not Supporting	2004
031300020604	Cedar Creek	Heard	Heard County	9	1	-	-	Fishing	Supporting	-
031300020605	Brush Creek	Heard	Heard County	10	1	-	-	Fishing	Supporting	-
031300020702	Pepperell Creek	Troup	LaGrange	1	4a	FC	UR	Fishing	Not Supporting	2001
031300020703	Shoal Creek	Troup	Troup County	11	1	-	-	Fishing	Supporting	-
031300020708	Shoal Creek	Troup	Headwaters (Mountville) to I-85/Ga. Hwy. 403	3	4a	Bio F	NP	Fishing	Not Supporting	2004
031300020709	Dixie Creek	Troup	LaGrange	3	4a	FC	UR	Fishing	Not Supporting	2001
031300020713	Flat Creek	Meriwether/ Troup	Tom Keith Road to Yellow Jacket Creek	9	1	-	-	Fishing	Supporting	-
031300020714	Yellowjacket Creek	Troup	Hogansville to West Point Lake	5	4a	FC	NP	Fishing	Not Supporting	?
031300020715	Yellowjacket Creek	Coweta/ Meriwether/ Troup	Headwaters to Blue Creek	12	1	-	-	Fishing	Supporting	-

Georgia Environmental Protection Division
 Middle Chattahoochee Water Council
Existing Regulatory and Local Plan Summary

Table A-I. 305(b)/303(d) Listed Streams										
<i>Stream Data</i>					<i>305(b)/303(d) & TMDL Data</i>					
HUC 12	Reach Name	County	Location Description	Stream Extension (miles)	303(b)/303(d) Assessment Category	Criterion Violated ¹	Potential Cause Code ²	Water Use	Evaluation	TMDL Implementation Plan -OR- Priority Year
031300020801	Whitewater Creek	Heard/ Troup	Heard/Troup Counties	17	1	-	-	Fishing	Supporting	-
031300020802	Wehadkee Creek	Heard	Heard County	7	1	-	-	Fishing	Supporting	-
031300020901	Long Cane Creek	Troup	Panther, Blue John & Long Cane Creeks(d/s LaGrange) to Chattahoochee River	14	4a	Bio F, FC	UR	Fishing	Not Supporting	2004
031300020902	Long Cane Creek	Troup	Headwaters to Panther Creek	9	1	-	-	Fishing	Supporting	-
031300020903	Tanyard Creek	Troup	LaGrange	2	4a	FC	UR	Fishing	Not Supporting	2004
031300020904	Troup Branch	Troup	LaGrange	1	4a	FC	UR	Fishing	Not Supporting	2001
031300020905	Blue John Creek	Troup	LaGrange	8	4a	FC	UR	Fishing	Not Supporting	2004
031300020906	Chattahoochee River	Troup/ Harris	West Point Dam to Johnson Island	13	1	-	-	Drinking Water/ Fishing	Supporting	-
031300020907	Park Branch	Troup	LaGrange	2	4a	FC, Cu	UR	Fishing	Not Supporting	2001(FC), 2004(Cu)
031300020908	Lee Branch	Troup	LaGrange	1	4a	FC	UR	Fishing	Not Supporting	2001
031300021002	Mud Creek	Troup	Troup County	9	1	-	-	Fishing	Supporting	-
031300021003	Polecat Creek	Troup	Troup County	9	1	-	-	Fishing	Supporting	-
031300021005	Sulfur Creek	Meriwether/ Troup	D/S White Sulfur Creek	6	1	-	-	Fishing	Supporting	-
031300021007	Wildcat Creek	Troup	Troup County	4	1	-	-	Fishing	Supporting	-
031300021008	Big Springs Creek	Troup	Troup County	6	1	-	-	Fishing	Supporting	-
031300021009	Big Branch	Troup	Troup County	4	1	-	-	Fishing	Supporting	-
031300021010	Crawford Creek	Meriwether/ Troup	Meriwether/Troup Counties	6	1	-	-	Fishing	Supporting	-
031300021011	Flat Shoals Creek	Troup/ Harris	West Point	26	1	-	-	Fishing	Supporting	-
031300021014	Ingram Creek	Troup	Troup County	4	1	-	-	Fishing	Supporting	-
031300021101	Mountain Oak Creek	Harris	Hamilton	5	4a	FC	NP	Fishing	Not Supporting	2004
031300021201	Ossahatchie Creek	Harris	Hwy 1 to Hwy 85 near Cataula	7	1	-	-	Fishing	Supporting	-

Georgia Environmental Protection Division
 Middle Chattahoochee Water Council
Existing Regulatory and Local Plan Summary

Table A-I. 305(b)/303(d) Listed Streams										
<i>Stream Data</i>					<i>305(b)/303(d) & TMDL Data</i>					
HUC 12	Reach Name	County	Location Description	Stream Extension (miles)	303(b)/303(d) Assessment Category	Criterion Violated ¹	Potential Cause Code ²	Water Use	Evaluation	TMDL Implementation Plan -OR- Priority Year
031300021202	Mulberry Creek	Harris	Ossahatchie Creek to Five Points Branch West near Mulberry Grove	8	4a	FC	NP	Fishing	Not Supporting	2004
031300021203	Barnes Creek	Harris	Headwaters to Little Branch	4	3			Fishing	Assessment Pending	
031300021205	Sparks Creek	Harris	Porter Creek to Mulberry Creek	6	1	-	-	Fishing	Supporting	-
031300021206	Williams Creek	Harris	Headwaters to Mulberry Creek	4	1	-	-	Fishing	Supporting	-
031300021301	Heiferhorn Creek	Muscogee	Columbus	3	1	-	-	Fishing	Supporting	-
031300021302	Roaring Branch	Muscogee	Downstream Columbus Foundaries	2	1	-	-	Fishing	Supporting	-
031300021303	Roaring Branch	Muscogee	U/S Columbus Foundaries	1	1	-	-	Fishing	Supporting	-
031300021306	Chattahoochee River	Muscogee	Oliver Dam to N. Highland Dam	2	4a	FCG(PCBs)	UR	Fishing	Not Supporting	2004
031300030101	Lindsey Creek	Muscogee	Columbus	6	1	-	-	Fishing	Supporting	-
031300030102	Rocky Branch	Muscogee	Columbus	2	1	-	-	Fishing	Supporting	-
031300030103	Turkey Creek	Muscogee	Columbus	1	1	-	-	Fishing	Supporting	-
031300030104	Weracoba Creek	Muscogee	Columbus	6	4a,5	FC, Bio M	UR	Fishing	Not Supporting	2017
031300030106	Chattahoochee River	Muscogee	North Highland Dam to Upatoi Creek	12	4a	FC, FCG(PCBs)	UR	Fishing	Not Supporting	2004
031300030107	Cooper Creek	Muscogee	Columbus	6	1	-	-	Fishing	Supporting	-
031300030108	Double Branch	Muscogee	Columbus	1	1	-	-	Fishing	Supporting	-
031300030109	Dram Creek	Muscogee	Columbus	1	1	-	-	Fishing	Supporting	-
031300030110	Flatrock Creek	Muscogee	Columbus	3	1	-	-	Fishing	Supporting	-
031300030111	Bull Creek	Muscogee	Flat Rock Creek to Cooper Creek, Columbus	3	5	Bio F	UR	Fishing	Not Supporting	2007
031300030112	Bull Creek	Harris/ Muscogee	Headwaters to Flat Rock Creek	10	1	-	-	Fishing	Supporting	-
031300030201	Little Juniper Creek	Marion/ Chattahoochee	Headwaters to Kings Mill Pond	7	4a	Bio F	NP	Fishing	Not Supporting	2004
031300030301	Randall Creek	Muscogee	Columbus	3	1	-	-	Fishing	Supporting	-
031300030303	Upatoi Creek	Muscogee/ Chattahoochee	U/S Chattahoochee River, Columbus	14	1	-	-	Fishing	Supporting	-
031300030304	Ochillee Creek	Chattahoochee	Hollis Creek to Spring Creek	5	1	-	-	Fishing	Supporting	-

Georgia Environmental Protection Division
 Middle Chattahoochee Water Council
Existing Regulatory and Local Plan Summary

Table A-I. 305(b)/303(d) Listed Streams										
<i>Stream Data</i>					<i>305(b)/303(d) & TMDL Data</i>					
HUC 12	Reach Name	County	Location Description	Stream Extension (miles)	303(b)/303(d) Assessment Category	Criterion Violated ¹	Potential Cause Code ²	Water Use	Evaluation	TMDL Implementation Plan -OR- Priority Year
031300030305	Pine Knot Creek	Marion/Chattahoochee	Parkers Mill Creek to Little Pine Knot Creek	6	4a	Bio F	NP	Fishing	Not Supporting	2004
031300030306	Tiger Creek	Muscogee	Headwaters to Upatoi Creek, Columbus	5	4a	Bio F	NP	Fishing	Not Supporting	2004
031300030307	Little Pine Knot Creek	Chattahoochee	Headwaters to Pine Knot Creek	4	4a	Bio F	NP	Fishing	Not Supporting	2004
031300030308	Hollis Creek	Chattahoochee	Headwaters to Ochillee Creek	4	3			Fishing	Assessment Pending	
031300030309	Halloca Creek	Chattahoochee	Headwaters to Ochillee Creek	6	1	-	-	Fishing	Supporting	-
031300030310	Sally Branch	Chattahoochee	Headwaters to Pine Knot Creek	6	1	-	-	Fishing	Supporting	-
031300030602	Little Hichitee Creek	Chattahoochee	Headwaters to Hichitee Creek	6	4a	Bio F	NP	Fishing	Not Supporting	2004
031300030603	Hichitee Creek	Chattahoochee/Stewart	Caney Creek to Sand Branch	5	4a	Bio F	NP	Fishing	Not Supporting	2004
031300030604	Chattahoochee River	Chattahoochee	Upatoi Creek to Chattahoochee/Stewart Co. Line	18	4a	FC	UR	Fishing	Not Supporting	2004
031300030605	Chattahoochee River	Stewart	Chattahoochee/Stewart Co. line to Hannahatchee Creek	10	5	FC	NP	Fishing	Not Supporting	2007
031300030606	Hichitee Creek	Chattahoochee	Stevens Branch to Little Hitchitee Creek	2	3			Fishing	Assessment Pending	
031300030701	Hannahatchee Creek	Stewart	U.S. Hwy 27 to Lake W.F. George	14	4a	FC	NP	Fishing	Not Supporting	2001
031300030702	Colochee/Frog Bottom Creek	Stewart	Hightower Branch to Hannahatchee Creek	5	1	-	-	Fishing	Supporting	-
031300030703	Black Creek	Stewart	Headwaters to Hannahatchee Creek	6	4a	Bio F	NP	Fishing	Not Supporting	2004
031300030704	Hannahatchee Creek	Stewart	Ben Owens Creek to Bussey Branch	7	1	-	-	Fishing	Supporting	-
031300030901	Bustahatchee Creek	Quitman	Confluence with North Fork to Lake Walter F. George	1	4a	Bio F	NP	Fishing	Not Supporting	2004
031300030902	Chattahoochee River	Stewart	Hannahatchee Creek to Hatchechubbee Creek (Alabama)	3	1			Fishing	Supporting	-
031300030903	Talipahoga Rum	Stewart	Headwaters to Bradley Lake Tributary	4	5	Bio M	NP	Fishing	Not Supporting	2017

Georgia Environmental Protection Division
 Middle Chattahoochee Water Council
Existing Regulatory and Local Plan Summary

Table A-I. 305(b)/303(d) Listed Streams										
<i>Stream Data</i>					<i>305(b)/303(d) & TMDL Data</i>					
HUC 12	Reach Name	County	Location Description	Stream Extension (miles)	303(b)/303(d) Assessment Category	Criterion Violated ¹	Potential Cause Code ²	Water Use	Evaluation	TMDL Implementation Plan -OR- Priority Year
	Creek									
031300030904	Grass Creek	Stewart	Headwaters to Walter F. George Reservoir	6	3			Fishing	Assessment Pending	
031300031301	Drag Nasty Creek	Quitman/ Clay	Tributary to W. F. George	7	4a	FC	NP	Fishing	Not Supporting	2001
031300031303	Tobanee Creek	Quitman	Headwaters to Walter F. George Lake	3	1	-	-	Fishing	Supporting	-
031300031401	Hodchodkee Creek	Stewart	SR 27 to Wimberly Mill Branch	3	4a	Bio F	NP	Fishing	Not Supporting	2004
031300031402	Hodchodkee Creek	Stewart	Day Creek to Foreman Mill Branch	5	4a	Bio F	NP	Fishing	Not Supporting	2004
031300031403	Smithee Jack Creek	Quitman	Headwaters to Hodchodkee Creek	5	1	-	-	Fishing	Supporting	-
031300031404	Day Creek	Stewart	Bluff Springs Branch to Hodchodkee Creek	1	4a	Bio F	NP	Fishing	Not Supporting	2004
031300031405	Day Creek	Stewart	Headwaters to Bluff Springs Branch	5	3			Fishing	Assessment Pending	
031300031501	Pataula Creek	Quitman/ Clay	Hodchodkee Creek to W. F. George Lake	6	4a	FC	NP	Fishing	Not Supporting	2004
031300031502	Pataula Creek	Stewart	Headwaters to Clear Creek	9	4a,5	Bio F, Bio M	NP	Fishing	Not Supporting	2017
031300031503	Pataula Creek	Randolph/ Quitman	Pumpkin Creek to Hodchodkee Creek	8	1	-	-	Fishing	Supporting	-
031300031504	Pumpkin Creek	Randolph	Little Pumpkin Creek to Pataula Creek	4	1	-	-	Fishing	Supporting	-
031300031505	Holanna Creek	Randolph/ Quitman	Hog Creek to Pataula Creek	7	1	-	-	Fishing	Supporting	-
031300031506	Clear Creek	Stewart	Headwaters to Lime Springs Branch	4	3			Fishing	Assessment Pending	
031300040101	Chattahoochee River	Clay	Downstream W.F. George Dam	2	4a	DO, FC	Dam Release, NP	Fishing	Not Supporting	2001(DO), 2004(FC)
031300040102	Hog Creek	Randolph/ Clay	Headwaters to Cemochechobee Creek	9	4a	Bio F	NP	Fishing	Not Supporting	2004
031300040103	Roaring Branch	Clay	Headwaters to Chattahoochee River	7	4a	Bio F	NP	Fishing	Not Supporting	2004
031300040104	Kolomoki Creek	Clay	Little Kolomoki Creek to Chattahoochee River	5	1	-	-	Fishing	Supporting	-

Georgia Environmental Protection Division
 Middle Chattahoochee Water Council
Existing Regulatory and Local Plan Summary

Table A-I. 305(b)/303(d) Listed Streams										
<i>Stream Data</i>					<i>305(b)/303(d) & TMDL Data</i>					
HUC 12	Reach Name	County	Location Description	Stream Extension (miles)	303(b)/303(d) Assessment Category	Criterion Violated ¹	Potential Cause Code ²	Water Use	Evaluation	TMDL Implementation Plan -OR- Priority Year
031300040105	Cemochechobee Creek	Randolph/Clay	Headwaters to Hog Creek	11	1	-	-	Fishing	Supporting	-
031300040106	Waukeefriskee Creek	Randolph/Clay	Headwaters to Cemochechobee Creek	8	3			Fishing	Assessment Pending	
031300040201	Flat Creek	Clay	Fendley Branch to Kolomoki Creek	7	1	-	-	Fishing	Supporting	-
031300040501	Chattahoochee River	Clay/ Early	D/S Fort Gaines to Lake Andrews	16	1	-	-	Fishing	Supporting	-
Flint River Basin										
031300070203	Clear Creek	Stewart/Webster	Headwaters to Kinchafoonee Creek	7	5	Bio M	NP	Fishing	Not Supporting	2017
031300090301	Ichawaynochaway Creek	Terrell/Randolph/Calhoun	Walk Ikey Creek to Falling Creek	7	1	-	-	Fishing	Supporting	-
031300090401	Town Creek	Randolph	Headwaters to Carter Creek	7	1	-	-	Fishing	Supporting	-
Tallapoosa River Basin										
031501080101	Tributary to Baxter Creek	Haralson	Bremen	1	4a	FC	UR	Fishing	Not Supporting	2001
031501080102	Baxter Creek	Haralson	Bremen to Little River	2	1	-	-	Fishing	Supporting	-
031501080103	Brooks Creek	Carroll/Haralson	Headwaters to Tallapoosa River	10	1	-	-	Fishing	Supporting	-
031501080104	Cochran Creek	Haralson	Headwaters to the Tallapoosa River	6	1	-	-	Fishing	Supporting	-
031501080105	Mud Creek	Carroll/Paulding	Headwaters to Tallapoosa River	5	5	Bio F	NP	Fishing	Not Supporting	2013
031501080106	Swinney Branch	Haralson/ Polk	Headwaters to Tallapoosa River	5	5	Bio F, Bio M	NP	Fishing	Not Supporting	2013
031501080107	Tallapoosa River	Paulding/Haralson	McClendon Creek to Water Mill Creek	7	1	-	-	Drinking Water	Supporting	-
031501080108	Thomasson Creek	Haralson/ Paulding	Confluence of Rabbit Branch and Caney Branch to Water Mill Creek	4	1	-	-	Fishing	Supporting	-
031501080109	Water Mill Creek	Haralson/ Paulding	White Creek to Tallapoosa River	5	1	-	-	Fishing	Supporting	-

Georgia Environmental Protection Division
 Middle Chattahoochee Water Council
Existing Regulatory and Local Plan Summary

Table A-I. 305(b)/303(d) Listed Streams										
<i>Stream Data</i>					<i>305(b)/303(d) & TMDL Data</i>					
HUC 12	Reach Name	County	Location Description	Stream Extension (miles)	303(b)/303(d) Assessment Category	Criterion Violated ¹	Potential Cause Code ²	Water Use	Evaluation	TMDL Implementation Plan -OR- Priority Year
031501080110	Little River	Haralson	Baxter Creek to Tallapoosa River	10	5	FC	NP	Fishing	Not Supporting	2013
031501080111	Tallapoosa River	Haralson	Water Mill Creek to Little River	9	1	-	-	Fishing	Supporting	-
031501080113	Tributary to Tallapoosa River	Haralson	Haralson County (near Rainey and Watts Lakes)	4	1	-	-	Fishing	Supporting	-
031501080202	Beach Creek	Haralson	Headwaters to Tallapoosa River	8	1	-	-	Fishing	Supporting	-
031501080203	Lassetter Creek	Haralson	Headwaters to Tallapoosa River	3	1	-	-	Fishing	Supporting	-
031501080204	Mann Creek	Haralson	Haralson County	6	1	-	-	Fishing	Supporting	-
031501080205	Tallapoosa River	Haralson	Little River to Beach Creek	12	4a	FC	NP	Fishing	Not Supporting	-
031501080206	Greene Creek	Haralson	American Legion Lake to Tallapoosa River	4	5	Bio M	NP	Fishing	Not Supporting	2013
031501080207	Harris Creek	Haralson	Headwaters to Beach Creek	4	1	-	-	Fishing	Supporting	-
031501080208	Big Creek	Haralson	Little Creek to Lassetter Creek	4	1	-	-	Fishing	Supporting	-
031501080209	Big Creek	Haralson	Lassiter Creek to Tallapoosa River	1	1	-	-	Fishing	Supporting	-
031501080301	Tallapoosa River	Haralson	Hwy. 100 to Stateline	10	4a	FC	NP	Fishing	Not Supporting	2006
031501080302	Walker Creek	Haralson	Blalock Creek to Tallapoosa River	7	5	FC	NP	Fishing	Not Supporting	2013
031501080303	Walton Creek	Haralson	Headwaters to Walker Creek	4	1	-	-	Fishing	Supporting	-
031501080801	Tributary to Buck Creek	Haralson	Headwaters to 1 mile d/s of Headwaters in Bremen	1	4a	FC	UR	Fishing	Not Supporting	2001
031501080804	Little Tallapoosa River	Carroll	Little Tallapoosa Lake to Sharpe Creek	7	1	-	-	Fishing	Supporting	-
031501080805	Trestle Creek	Carroll	Temple	2	1	-	-	Fishing	Supporting	-
031501080806	Buck Creek	Carroll	Bear Creek to Little Tallapoosa River	3	5	FC	NP	Fishing	Not Supporting	2013
031501080807	Little Tallapoosa River	Carroll	Sharpe Creek to Buck Creek	11	4a,5	Bio M, FC	NP	Fishing	Not Supporting	2013
031501080808	Buck Creek	Carroll	Little Buck Creek to Bear Creek	3	1	-	-	Fishing	Supporting	-
031501080809	Tributary to Buck Creek	Haralson	1 mile d/s of Headwaters to Buck Creek	4	1	-	-	Fishing	Supporting	-
031501080810	Buck Creek	Carroll	Cantrell Lake to Little Buck Creek	7	1	-	-	Fishing	Supporting	-
031501080901	Buffalo Creek	Carroll	Upstream Little Tallapoosa River	6	4a	FC, Cu	UR	Fishing	Not Supporting	2006
031501080902	Buffalo Creek	Carroll	Downstream Southwire Corp.	3	4a,5	Cu, FC, Bio F	I2, UR	Fishing	Not Supporting	2013

Georgia Environmental Protection Division
 Middle Chattahoochee Water Council
Existing Regulatory and Local Plan Summary

Table A-I. 305(b)/303(d) Listed Streams										
<i>Stream Data</i>					<i>305(b)/303(d) & TMDL Data</i>					
HUC 12	Reach Name	County	Location Description	Stream Extension (miles)	303(b)/303(d) Assessment Category	Criterion Violated ¹	Potential Cause Code ²	Water Use	Evaluation	TMDL Implementation Plan -OR- Priority Year
031501080903	Little Tallapoosa River	Carroll	Buffalo Creek to Stateline	14	4a	FC, Bio M	UR	Fishing	Not Supporting	2006
031501080905	Tributary to Buffalo Creek	Carroll	Carrollton	1	4a	Cu	I2	Fishing	Not Supporting	2006
031501080906	Indian Creek	Carroll	Headwaters to Little Tallapoosa River near Roopville	3	5	Bio F	NP	Fishing	Not Supporting	2013
031501080907	Little Tallapoosa River	Carroll	Buck Creek to Buffalo Creek	11	1	-	-	Fishing	Supporting	-
031501080908	Mountain Creek	Heard/ Carroll	Headwaters to Little Tallapoosa River	7	3			Fishing	Assessment Pending	
031501081001	Indian Creek	Carroll	D/S Brickyard Rd. to Little Tallapoosa River near Bowdon	6	5	FC	NP	Fishing	Not Supporting	2013
031501081002	Turkey Creek	Carroll	Little Turkey Creek to Jumpin In Creek	6	5	Bio F	NP	Fishing	Not Supporting	2013
031501081003	Little Turkey Creek	Carroll	Headwaters to Turkey Creek	5	5	Bio F	NP, UR	Fishing	Not Supporting	2013
031501081004	Indian Creek	Carroll	Headwaters to Turkey Creek	7	5	Bio F	NP	Fishing	Not Supporting	2013

Notes:

- 1.) BioF = Biota Impacted (Fish Community); BioM = Biota Impacted (Macroinvertebrate Community); DO = Dissolved Oxygen; FC = Fecal Coliform; FCG = Fish Consumption Guidance; TWR = Trophic-Weighted Residue Value of mercury in fish tissue exceeding the EPD human health standard of 0.3 mg/kg; Cu = Copper
- 2.) M = Municipal Facility; NP = Nonpoint Source/Unknown Source; UR = Urban Runoff/Urban Effects I2 = Industrial Facility Nonpoint Source

Georgia Environmental Protection Division
 Middle Chattahoochee Water Council
Existing Regulatory and Local Plan Summary

Table A-2. 305(b)/303(d) Listed Lakes										
<i>Lake Data</i>					<i>305(b)/303(d) & TMDL Data</i>					
HUC 12	Lake Name	County	Location Description	Lake Area (acres)	303(b)/303(d) Assessment Category	Criterion Violated ¹	Potential Cause Code ²	Water Use	Evaluation	TMDL Implementation Plan -OR- Priority Year
Chattahoochee River Basin										
031300020803	West Point Lake	Troup/ Heard	Troup and Heard Counties	22911	4a	FCG(PCBs)	UR, NP	Recreation	Not Supporting	2001
031300021102	Harding Lake	Harris	Bartletts Ferry, Harris County	5851	4a	FCG(PCBs)	NP	Recreation / Drinking Water	Not Supporting	2001
031300021204	Franklin Lake	Harris	F.D. Roosevelt State Park	29	1	-	-	Fishing	Supporting	-
031300021304	Oliver Lake	Muscogee	Near Columbus	2150	4a	FCG(PCBs)	NP	Recreation / Drinking Water	Not Supporting	2001
031300021305	Goat Rock Lake	Harris	Harris County	941	4a	FCG(PCBs)	NP	Drinking Water/ Recreation	Not Supporting	2001
031300031304	Walter F. George Lake	Quitman/Clay	Mid-Lake (U.S. Hwy 82) to Dam Forebay	29890	3			Recreation	Assessment Pending	
031300031601	Walter F. George Lake	Clay	Dam Pool	16863	3			Recreation	Assessment Pending	
Tallapoosa River Basin										
031501080811	Carroll Lake	Carroll	Carrollton	166	1	-	-	Fishing	Supporting	-
031501080909	John Tanner Lake (upper lake)	Carroll	John Tanner State Park, Carroll County	16	1	-	-	Fishing	Supporting	-

1.) FCG = Fish Consumption Guidance

2.) NP = Nonpoint Source/Unknown Source; UR = Urban Runoff/Urban Effects

Georgia Environmental Protection Division
 Middle Chattahoochee Water Council
Existing Regulatory and Local Plan Summary

Table A-3. River Valley Regional Commission – Review of Local Comprehensive Plans, Water Resource BMPs					
Description of Identified Practices by Local Planning Authority	Fiscal Year	Responsible Party	Cost Estimate	Funding Source	Type Water Management
<i>Chattahoochee County - Cusseta</i>					
Establish a surface water system including public sewer	2008-2010	County	\$10,000,000	CDBG, USDA, GEFA, Developers	Water quantity and quality
Establish new well systems	2008-2010	County	\$1,000,000-2,000,000	USDA, GEFA	Water quantity
The county needs to adopt a Storm Water Ordinance	2008	County	\$1,000	County	Water quality
Make drainage and street improvements	2008-2011	County Commission	\$300,00	CDBG, LDF	Water quality
Work with the region on implementing the Regional Strategy related to TMDL/Water Quality issues	2002-2004	City	\$500 per year	City, DNR, RDC	Water quality
Work with the region on implementing the Regional Strategy related to TMDL/Water Quality issues	2002-2006	County	\$500 per year	County, DNR, RDC	Water quality
Cusseta-Chattahoochee County has been mapped for flood prone areas under Federal Emergency Management Agency program and participates in the National Flood Insurance Program	2008 ongoing	County	Staff time	General Fund	Water quality
<i>Clay County</i>					
Construct and maintain public water and sewer systems in growing areas of the county	2007-2012	County	\$1,000,000	CDBG, USDA, Local	Water quantity and quality
Adopt Part V Planning Criteria for wetlands and groundwater recharge areas	TBD	County	\$3,000	DCA, EPD, Local	Water quality
Adopt Total Maximum Daily Load (TMDL) limits for Drag Nasty, Hog, Pataula, and Roaring Branch Creeks and the Chattahoochee River	TBD	County	\$5,000	DCA, EPD, Local	Water quality
We are using storm water best management practices for all new development	N/A	County	N/A	General Fund	Water quantity and quality
We have land use measures that will protect the natural resources in our community (steep slope regulations, floodplain or marsh protection, etc.)	N/A	County	N/A	General Fund	Water quality
Clay County adopted planning and zoning ordinances to ensure the proper control of water and septic systems 1) assure building permits 2) require a health department check for soil suitability for septic tank use prior to allowing occupancy of new structures in the county 3) provide population density control by enactment of enforcement of a county-wide zoning ordinance	2002	County	N/A	General Fund	Water quantity and quality
Clay County participates in the National Flood Insurance Program on an emergency basis	2008-2010	County	Staff Time	General Fund	Water quality

Georgia Environmental Protection Division
 Middle Chattahoochee Water Council
Existing Regulatory and Local Plan Summary

Table A-3. River Valley Regional Commission – Review of Local Comprehensive Plans, Water Resource BMPs					
Description of Identified Practices by Local Planning Authority	Fiscal Year	Responsible Party	Cost Estimate	Funding Source	Type Water Management
To be mapped for Flood prone areas under the Federal Emergency Management Agency (FEMA)	2008-2010	County	Staff Time	General Fund	Water quality
Bluffton (Clay County)					
Adopt and enforce a protection plan for wetlands	N/A	City	\$3,000	DCA, EPD, Local	Water quality
Adopt and enforce a protection plan for groundwater recharge areas	N/A	City	\$3,000	DCA, EPD, Local	Water quality
To be mapped for Flood prone areas under the Federal Emergency Management Agency (FEMA)	2008-2010	City	Staff Time	General Fund	Water quality
Fort Gaines (Clay County)					
Make necessary improvements to the water and sewer systems	2008-2012	City	\$100,000	DCA, USDA, FEMA, Local	Water quantity and quality
Resurface city roads, pave densely population roads, and provide drainage improvements	2007-2012	City	\$500,000	CDBG, USDA, GDOT, Local	Water quality
Adopt Part V Planning Criteria for river corridors and groundwater recharge areas	TBD	City	\$3,000	DCA, EPD, Local	Water quality
Adopted ordinance identifying flood prone areas and participates in the National Flood Insurance Program	2008-2010	City	Staff Time	General Fund	Water quality
Harris County					
Pursue more effective water conservation and aqua-culture techniques, resource conservation and protection in the county. Look to develop landscaping measures that require drought resistant plants, or measures to promote water saving appliances or other water conservation techniques	2011	County	\$2,000	County, DNR	Water quantity and quality
Waterway and wetland integrity needs to be maintained by limiting development and maintaining appropriate buffers. Management planning for significant community natural and cultural resources is needed. Continue enforcement of existing state and local regulations. Consider developing a conservation ordinance to help protect valuable resources and guide development away from important resources.	2009-2012	County	\$10,000	County, DNR (state grants)	Water quantity and quality
Identify potential water pollution problems and solutions	2013	County	\$20,000	County, DNR	Water quality
Look at regulations and/or adopt appropriate site design guidelines that set aside, protect, or minimize environmentally sensitive areas such as stream-banks, steep slopes, wetlands, etc.	2012	County	\$2,500	County	Water quality
Continue to enforce soil erosion, storm water best management practices	2009-2010	County	\$10,000	County, DNR	Water quality
Work with the region to implement the Regional Strategy dealing with TMDL/Water Quality issues	N/A	County	N/A	N/A	Water quality
Adopted the Water Supply Watershed Ordinance as required under the Environmental Planning Criteria (391-3-16) proposed by the Environmental Protection Division of Georgia DNR	N/A	County	N/A	General Fund	Water quantity and quality

Georgia Environmental Protection Division
 Middle Chattahoochee Water Council
Existing Regulatory and Local Plan Summary

Table A-3. River Valley Regional Commission – Review of Local Comprehensive Plans, Water Resource BMPs					
Description of Identified Practices by Local Planning Authority	Fiscal Year	Responsible Party	Cost Estimate	Funding Source	Type Water Management
Adopted the Groundwater Recharge Area Ordinance as required under the Environmental Planning Criteria (391-3-16) proposed by the Environmental Protection Division of Georgia DNR	N/A	County	N/A	General Fund	Water quantity and quality
Adopted the Wetland Ordinance as required under the Environmental Planning Criteria (391-3-16) proposed by the Environmental Protection Division of Georgia DNR	N/A	County	N/A	General Fund	Water quantity and quality
Adopted the River Corridor Protection Ordinance as required under the Environmental Planning Criteria (391-3-16) proposed by the Environmental Protection Division of Georgia DNR	N/A	County	N/A	General Fund	Water quantity and quality
Mapped for flood prone areas under the Federal Emergency Management Agency program and participates in the National Flood Insurance Program	N/A	County	N/A	Staff Time	Water quality
Adopted Flood Damage Prevention Ordinance	N/A	County	N/A	Staff Time	Water quality
County requires that every survey plat contain flood hazard area determination on the plat itself	N/A	County	N/A	Staff Time	Water quality
Harris County Health Department requires that all buildings in the County have an adequate method of sewage disposal. Building permits are not issued until sewage disposal plans have been approved by the Health Department	N/A	County	N/A	Staff Time	Water quality
Community has passed the necessary Part V Environmental Ordinances, and enforces them	N/A	County	N/A	General Fund	Water quantity and quality
Hamilton (Harris County)					
None					
Pine Mountain (Harris County)					
Adopted the Groundwater Recharge Area Ordinance as required under the Environmental Planning Criteria (391-3-16) proposed by the Environmental Protection Division of Georgia DNR	N/A	City	N/A	General Fund	Water quantity and quality
Adopted the Wetland Ordinance as required under the Environmental Planning Criteria (391-3-16) proposed by the Environmental Protection Division of Georgia DNR	N/A	City	N/A	General Fund	Water quantity and quality
Shiloh (Harris County)					
Adopted the Water Supply Watershed Ordinance as required under the Environmental Planning Criteria (391-3-16) proposed by the Environmental Protection Division of Georgia DNR	N/A	City	N/A	General Fund	Water quantity and quality
Adopted the Wetland Ordinance as required under the Environmental Planning Criteria (391-3-16) proposed by the Environmental Protection Division of Georgia DNR	N/A	City	N/A	General Fund	Water quantity and quality
Mapped for flood prone areas under the Federal Emergency Management Agency program	N/A	City	N/A	Staff Time	Water quality
Waverly Hall (Harris County)					
Mapped for flood prone areas under the Federal Emergency Management Agency program and participates in the National Flood Insurance Program	N/A	City	N/A	Staff Time	Water quality

Georgia Environmental Protection Division
 Middle Chattahoochee Water Council
Existing Regulatory and Local Plan Summary

Table A-3. River Valley Regional Commission – Review of Local Comprehensive Plans, Water Resource BMPs					
Description of Identified Practices by Local Planning Authority	Fiscal Year	Responsible Party	Cost Estimate	Funding Source	Type Water Management
<i>Muscogee County - Columbus</i>					
Support protection of the Chattahoochee River and its tributaries by requiring adequate riparian buffers to control runoff and sedimentation from new development. Prohibit incompatible uses such as new sanitary landfills, junkyards, heavy industry and use of toxic substances to protect water quality.	N/A	County/City	N/A	N/A	Water quality
Redirect development in floodplain areas to protect sensitive wetland and private property from the impact of seasonal flooding. Use floodplains as possible sites for pervious trails and passive recreational uses.	N/A	County/City	N/A	N/A	Water quality
Provide Best Management Practices for storm water management and meet or exceed all state and local standards for protection of wetlands, streams, lakes, ponds, and aquifer recharge areas	N/A	County/City	N/A	N/A	Water quality
Preserve green space along major tributaries of the Chattahoochee and linking the local parks by a system of greenways and trails will help protect the natural environment of future generations	N/A	County/City	N/A	N/A	Water quality
IS.76 Strictly enforce soil erosion and sedimentation controls and storm water BMPs within the Chattahoochee River corridor	N/A	County/City	N/A	CWW, DNR	Water quality
IS.77 Continue to monitor and protect Columbus’s water quality	N/A	County/City	N/A	DNR	Water quality
IS.90 Columbus will need to step up its efforts to monitor and protect its clean water in the Chattahoochee River and other significant water bodies as new growth takes place. Five of the city’s significant rivers and streams, along with Lake Oliver, have been identified as not fully supporting the water quality standards mandated by the Clean Water Act. It is important to buffer these critical water bodies and protect them from pollution from urban run-off.	N/A	County/City	N/A	CWW	Water quality
<i>Quitman County - Georgetown</i>					
Adopted Groundwater Recharge Area Ordinance as required under the Environmental Planning Criteria (391-3-16) proposed by the Environmental Protection Division of Georgia DNR	N/A	County/City	N/A	N/A	Water quality
Adopted Wetland Ordinance as required under the Environmental Planning Criteria (391-3-16) proposed by the Environmental Protection Division of Georgia DNR	N/A	County	N/A	N/A	Water quality
Mapped for flood prone areas and participates in the National Flood Insurance Program	1978	City	N/A	N/A	Water quality
Develop and implement a groundwater recharge protection plan	2006-2008	County/City/RC	\$8,000	General Fund	Water quantity
Enforce the protection of wetland areas	2005-2010	County	\$15,000	General Fund	Water quality
Alleviate drainage problems on frequently traveled city and county roads	2005-2010	County/City	N/A	CDBG/GDOT	Water quality
Conduct feasibility study to extend county water into unserved areas	2007-2008	County/RC	\$2,500	DCA	Water quantity
Conduct feasibility study to investigate a county sewer system	2006-2007	County/RD	\$2,500	DCA	Water quality
Our community has passed the necessary Part V Environmental Ordinances, and enforce them	N/A	County/City	N/A	N/A	Water quality

Georgia Environmental Protection Division
 Middle Chattahoochee Water Council
Existing Regulatory and Local Plan Summary

Table A-3. River Valley Regional Commission – Review of Local Comprehensive Plans, Water Resource BMPs					
Description of Identified Practices by Local Planning Authority	Fiscal Year	Responsible Party	Cost Estimate	Funding Source	Type Water Management
Use storm water BMPs for all new development	N/A	County/City	N/A	N/A	Water quality
Will consider a steep slope ordinance to help protect the natural resources in the community (steep slope regulations, floodplain or marsh protection, etc.)	N/A	County/City	N/A	N/A	Water quality
Coordinate and continue to enforce storm water management regulations	2009-2013	County	\$3,000	Randolph County	Water quality
Look at sewage system, both private and public, options	2013	County	\$2,000	County	Water quality
Maintain/update/expand public facilities and services, including water, medical, ambulance, schools, etc. as economic conditions allow	2009-2013	County	\$500,000 - \$1,000,000	County, CDBG, USDA	Water quantity and quality
Identify water pollution problems and solutions	2011	County	\$5,000	County, DCA, DNR	Water quality
Identify and prioritize erosion, sedimentation, and storm water runoff problems	2011	County	\$5,000	County, DCA, DNR	Water quality
Look at regulations and/or adopt appropriate site design guidelines that set aside, protect, or minimize environmentally sensitive areas such as stream-banks, steep slopes, wetlands, etc.	2011	County	\$2,000	County	Water quality
Continue to enforce soil erosion, storm water BMP practices	2009-2013	County	\$5,000	County	Water quality
Randolph County					
Adopt and enforce a protection plan for the ground-water recharge area	1993	County/LCRDC	N/A	N/A	Water quality
Request mapping of flood prone areas	1994	County	N/A	N/A	Water quality
Adopt and enforce policies for the protection of wetland areas	1993	County	N/A	N/A	Water quality
Use of storm water BMPs for all new development	N/A	County	N/A	N/A	Water quality
Land use measures that will protect the natural resources in the community (steep slope regulations, floodplain or marsh protection, etc.)	N/A	County	N/A	N/A	Water quality
Work with Health Department to identify failing septic tanks and areas of potential failure	2012	County	\$3,000	County	Water quality
Look at sewage system, both private and public options	2013	County	\$2,000	County	Water quality
Maintain/update/expand public facilities and services, including water, medical, ambulance, schools, etc. as economic conditions allow	2009-2013	County, School Board, DFACS, etc.	\$500,000-\$1,000,000	County, CDBG, USDA	Water quantity and quality
Identify water pollution problems and solutions	2011	County	\$5,000	County, DNR	Water quality
Identify and prioritize erosion, sedimentation, and storm water runoff problems	2011	County	\$5,000	County, DCA, DNR	Water quality
Look at regulations and/or adopt appropriate site design guidelines that set aside, protect, or minimize environmentally sensitive areas such as stream-banks, steep slopes, wetlands, etc.	2011	County	\$2,000	County	Water quality
Continue to enforce soil erosion, storm water best management practices	2009-2013	County	\$5,000	County	Water quality
Coleman (Randolph County)					
Coordinate with the county in the development of a protection plan for the ground-water recharge areas	1993	City/County/LCRDC	N/A	N/A	Water quality
Cuthbert (Randolph County)					
Adopt and enforce a protection plan for the ground-water recharge area	1993	City/LCRDC	N/A	N/A	Water quality

Georgia Environmental Protection Division
 Middle Chattahoochee Water Council
Existing Regulatory and Local Plan Summary

Table A-3. River Valley Regional Commission – Review of Local Comprehensive Plans, Water Resource BMPs					
Description of Identified Practices by Local Planning Authority	Fiscal Year	Responsible Party	Cost Estimate	Funding Source	Type Water Management
Request mapping of flood prone areas	1994	City	N/A	N/A	Water quality
Adopt and enforce policies for the protection of wetland areas	1993	City	N/A	N/A	Water quality
Community has passed the necessary Part V Environmental Ordinances, and enforces them	N/A	City	N/A	N/A	Water quality
Community uses storm water BMPs for all new development	N/A	City	N/A	N/A	Water quality
Land use measures that will protect the natural resources in the community (steep slope regulations, floodplain or marsh protection, etc.)	N/A	City	N/A	N/A	Water quality
Update water lines	N/A	City	N/A	N/A	Water quantity
Pave remaining dirt roads	N/A	City	N/A	N/A	Water quality
Extend water and sewer lines on Hwy 82 West and East	N/A	City	N/A	N/A	Water quantity and quality
Maintain/update/expand public facilities and services, including water, medical, ambulance, schools, etc. as economic conditions allow	2009-2013	City, School Board, DFACS, etc.	\$500,000- \$1,000,000	City, CDBG, USDA	Water quantity and quality
Coordinate and continue to enforce storm water management regulations with Randolph County	2009-2013	City	\$3,000	City	Water quality
Continue efforts to upgrade water lines and fire hydrants in city	2009-2013	City	\$1,000,000	City	Water quantity
Make street and drainage improvements and construct a sidewalk on Hood Street	2011	City	\$500,000	GA DCA, Local	Water quality
Pursue more effective water conservation and aquaculture techniques, resource conservation and protection in the county	2011-2012	City	\$5,000	GA DNR, City	Water quantity
Work with developers, landowners, and conservation groups to protect natural resources and preserve open space around the County and in the cities by encouraging conservation subdivisions. Traditional neighborhood development and stream buffers, etc. Look at existing ordinances in an effort to create desirable development pattern	2009-2013	City	\$2,000	City	Water quantity and quality
Identify water pollution problems and solutions	2011	City	\$5,000	City, DNR	Water quality
Shellman (Randolph County)					
Adopt and enforce a protection plan for the ground-water recharge area	1993	City/LCRDC	N/A	N/A	Water quality
Community has passed the necessary Part V Environmental Ordinances, and enforces them	N/A	City	N/A	N/A	Water quality
Community uses storm water BMPs for all new development	N/A	City	N/A	N/A	Water quality
Land use measures that will protect the natural resources in the community (steep slope regulations, floodplain or marsh protection, etc.)	N/A	City	N/A	N/A	Water quality
Construct a back-up well	N/A	City	N/A	N/A	Water quantity
Upgrade water system (to include Pearl Street Water Main)	N/A	N/A	N/A	N/A	Water quantity
Investigate surface water in sewer system	N/A	N/A	N/A	N/A	Water quality
Pursue more effective water conservation and aquaculture techniques, resource conservation and protection in the county	2011-2012	City	\$5,000	GA DNR, City	Water quantity

Georgia Environmental Protection Division
 Middle Chattahoochee Water Council
Existing Regulatory and Local Plan Summary

Table A-3. River Valley Regional Commission – Review of Local Comprehensive Plans, Water Resource BMPs					
Description of Identified Practices by Local Planning Authority	Fiscal Year	Responsible Party	Cost Estimate	Funding Source	Type Water Management
Work with developers, landowners, and conservation groups to protect natural resources and preserve open space around the County and in the cities by encouraging conservation subdivisions. Traditional neighborhood development and stream buffers, etc. Look at existing ordinances in an effort to create desirable development pattern	2009-2013	City	\$2,000	City	Water quantity and quality
Look at adopting land use measures that will protect natural resources in Shellman (steep slopes, flood plains, etc.)	2012	City	\$1,500	City	Water quality
Identify water pollution problems and solutions	2011	City	\$5,000	City, DNR	Water quality
Identify and prioritize erosion, sedimentation, and storm water runoff problems	2011	City	\$5,000	City, DCA, DNR	Water quality
Look at regulations and/or adopt appropriate site design guidelines that set aside, protect, or minimize environmentally sensitive areas such as stream-banks, steep slopes, wetlands, etc.	2011	City	\$2,000	City	Water quality
Continue to enforce soil erosion, storm water best management practices	2009-2013	City	\$5,000	City	Water quality
Stewart County					
Uses storm water Best Management Practices for all new development	N/A	County	N/A	N/A	Water quantity and quality
Adopted Water Supply Watersheds Protection Ordinance as required by the Environmental Protection Division under the Environmental Planning Criteria	N/A	County	N/A	N/A	Water quantity and quality
Mapped for flood prone areas under the Federal Emergency Management Agency (FEMA) program and participates in the National Flood Insurance Program	N/A	County	N/A	N/A	Water quality
Expand and improve the County water system to provide better service to residents	2007	County	\$1,200,000	CDBG/ OneGA/ Local	Water quantity and quality
Pave dirt roads in County as needed	2007-2012	County	\$500,000	CDBG/ Local	Water quality
Adopt Part V Planning Criteria for Wetlands and Groundwater recharge areas	2010	County	\$1,000	County	Water quality
Lumpkin (Stewart County)					
Adopted Water Supply Watersheds Protection Ordinance as required by the Environmental Protection Division under the Environmental Planning Criteria	N/A	City	N/A	N/A	Water quantity and quality
Adopt Part V Environmental Planning Criteria for wetlands and groundwater recharge areas	2010	City	\$1,000	City	Water quality
Richland (Stewart County)					
Uses storm water Best Management Practices for all new development	N/A	City	N/A	N/A	Water quantity and quality
Adopted Water Supply Watersheds Protection Ordinance as required by the Environmental Protection Division under the Environmental Planning Criteria	N/A	City	N/A	N/A	Water quantity and quality
Make necessary improvements to the water and sewer system	2010	City	\$500,000	CDBG/Local	Water quantity and quality
Correct drainage problems	2009	City	\$500,000	CDBG	Water quality

Georgia Environmental Protection Division
 Middle Chattahoochee Water Council
Existing Regulatory and Local Plan Summary

Description of Identified Practices by Local Planning Authority	Fiscal Year	Responsible Party	Cost Estimate	Funding Source	Type Water Management
Adopt Part V Environmental Planning Criteria for wetlands and groundwater recharge areas	2010	City	\$1,000	City	Water quality

Description of Identified Practices by Local Planning Authority	Fiscal Year	Responsible Party	Cost Estimate	Funding Source	Type Water Management
<i>Troup County</i>					
Develop Greenspace Plan	2003	Troup County/RDC	\$15,000	Troup County/RDC	Management Practices to Protect Significant Natural Resources
Develop a PUD ordinance	2004	Troup County/RDC	\$1,000	Troup County	Enhanced Pollution Management Practices
Evaluate feasibility of packaged sewage treatment facilities or extending city sewer services to unincorporated area	2004	Troup County/RDC	\$5,000	Troup/LaGrange/ West Point/ Hogansville/DCA	Water Return Management Practices
<i>City of Hogansville (Troup County) (2003 Major Plan Amendment)</i>					
Incorporate existing environmental planning standards per DNR environmental planning criteria	1998-2000	City of Hogansville/ RDC		City	Management Practices to Protect Significant Natural Resources
Westside water and sewer development	1999-2001	City of Hogansville	\$200,000	CDBG	Water Return Management Practices
Lead paint abatement for City Water storage tank located on Pine Street	2000-2003	City of Hogansville	\$100,000	City	Enhanced Water Quality Standards & Monitoring Practices
<i>City of LaGrange (Troup County) (1992 Plan)</i>					
Develop a stormwater management program	1995	City/ Consultant		City	Enhanced Water Quality Standards & Monitoring Practices
Explore possibility of consolidated services with Troup County	1992	City of LaGrange		City of LaGrange	Enhanced Pollution Management Practices

Georgia Environmental Protection Division
 Middle Chattahoochee Water Council
Existing Regulatory and Local Plan Summary

Table A-4: Three Rivers Regional Commission – Review of Local Comprehensive Plans, Water Resource BMPs					
Description of Identified Practices by Local Planning Authority	Fiscal Year	Responsible Party	Cost Estimate	Funding Source	Type Water Management
Develop policy and ordinance to control the installation of septic tank disposal systems.	1993	Troup County Planning Commission/ City/ Health Department		TPCP/City of LaGrange	Water Return Management Practices
<i>City of West Point (Troup County)</i>					
Coordinate with adjacent jurisdictions to develop a Greenways Master Plan that outlines an area-wide system of interconnected greenway/trail corridors, addresses greenway trail crossings of all roads, and defines specific priorities for property acquisition to develop the system.	2012-2013	Community Development, DCA	\$15,000	General Fund, Grants	Management Practices to Protect Significant Natural Resources
Develop a Greenspace and Recreation Master Plan for West Point to guide investment in existing parks as well as investments in new parks and links existing greenspace, establishes criteria for future park areas.	2010-2011	Parks/Rec, Community Development	\$15,000	General Fund, Grants	Management Practices to Protect Significant Natural Resources
Prepare and adopt Suburban-Center Master Plans for each area (designated on the Future Development Map) to guide long-range development of these areas and address goals and objectives, building placement, design, and size, and materials, landscaping, access management, interparcel access, and other elements that contribute to the look and function of the district.	2013	Community Development, Development Authority	\$20,000	General Fund, Grants	Enhanced Pollution Management Practices
Redevelop the riverfront area adjacent City Hall to create a pedestrian-friendly atmosphere and transforms the riverfront into a center for recreation and leisure with views of the river.	2012-2013	Community Development, Development Authority, DDA, Visitor Center		General Fund, DA, DDA, VC	Management Practices to Protect Significant Natural Resources
Host joint workshops and symposiums that bring in experts on specific topics (e.g. conservation easements, innovative stormwater management, green architecture) to inform local officials and staff and the general public about common interests on a regular basis.	Ongoing	Historic Preservation Commission, DCA, Housing Authority, CD, RDC, DA, VC	\$5,000	General Fund	Enhanced Pollution Management Practices
Continue to work with regional and state agencies to identify funding sources related to transportation, utilities, community facilities and services, housing, economic development, and environmental and historic resource protection.	Ongoing	City of West Point	Staff time	General Fund	Management Practices to Protect Significant Natural Resources

Georgia Environmental Protection Division
 Middle Chattahoochee Water Council
Existing Regulatory and Local Plan Summary

Table A-4: Three Rivers Regional Commission – Review of Local Comprehensive Plans, Water Resource BMPs					
Description of Identified Practices by Local Planning Authority	Fiscal Year	Responsible Party	Cost Estimate	Funding Source	Type Water Management
Continue to work with federal agencies to identify funding sources related to transportation, utilities, community facilities and services, housing, economic development, and environmental and historic resource protection.	Ongoing	City of West Point	Staff time	General Fund	Management Practices to Protect Significant Natural Resources
Pursue government purchase of environmentally sensitive lands for the creation of wildlife areas, nature preserves, and public parks.	Ongoing	Nature Conservancy, Parks/Rec, DA, CD	TBD	General Fund, Nature Conservancy, Grants	Management Practices to Protect Significant Natural Resources
Develop a land conservation program with the Georgia Conservancy to create conservation easements or other similar conservation tools that preserve important natural areas.	Ongoing	Nature Conservancy, Parks/Rec, DA, CD	TBD	General Fund, Nature Conservancy, Grants	Management Practices to Protect Significant Natural Resources
Promote the use of Purchase of Development Rights (PDRs) and Transfer of Development Rights (TDRs).	Ongoing	Nature Conservancy, Community Development	Staff time	General Fund	Enhanced Pollution Management Practices
Develop a system/program that promotes the use of conservation easements and conservation tax credits by landowners.	2014	Community Development	Staff time	General Fund	Enhanced Pollution Management Practices
Establish a program designed to utilize conservation easements and other land preservation tools to preserve important natural areas on either public or private land.	2013	Parks/Rec, CD	Staff time	General Fund	Enhanced Pollution Management Practices
Considering establishing minimum open space requirements into development standards and incentives that encourage the creation of publicly accessible parks in new development.	2012	Community Development	Staff time	General Fund	Enhanced Pollution Management Practices
Review Floodplain Protection Ordinance to ensure compliance with state and federal regulations.	Ongoing	Community Development	Staff time	General Fund	Enhanced Pollution Management Practices
Review development regulations to ensure stormwater and erosion controls to mitigate construction and development impacts on natural areas.	Ongoing	Community Development	Staff time	General Fund	Enhanced Pollution Management Practices
Follow BMPs for erosion and sedimentation control, as defined in the Georgia Erosion and Sedimentation Act.	Ongoing	City of West Point	Staff time	General Fund	Enhanced Pollution Management Practices
Discourage development in environmentally sensitive areas, as delineated in the Natural development category (See Future Development Guide and Map).	Ongoing	Community Development	Staff time	General Fund	Enhanced Pollution Management Practices
Heard County					

Georgia Environmental Protection Division
 Middle Chattahoochee Water Council
Existing Regulatory and Local Plan Summary

Table A-4: Three Rivers Regional Commission – Review of Local Comprehensive Plans, Water Resource BMPs					
Description of Identified Practices by Local Planning Authority	Fiscal Year	Responsible Party	Cost Estimate	Funding Source	Type Water Management
Adopt overlay zone for Centralhatchee Creek water supply watershed and groundwater recharge areas.	2006-2007	Heard County/Cities	NA	Heard County/Cities	Enhanced Water Quality Standards & Monitoring Practices
Participate in continued regional greenspace planning and development.	2006-2010	Heard County/Cities/RDC	\$500,000	GDOT/DCA/DNR/USDA	Management Practices to Protect Significant Natural Resources
Upgrade Brush Creek Recreation facilities and heritage programs and market for tourism.	2006-2010	Heard County	\$25,000	Heard County/DNR/GA Forestry	Management Practices to Protect Significant Natural Resources
Expand water treatment facilities and distribution system.	2006-2010	Heard County Water Authority	\$4 million	HCWA/DCA/USDA ARC	Enhanced Water Quality Standards & Monitoring Practices
Construct new wastewater treatment facility and upgrade collection system.	2006-2010	Heard County Water Authority	\$3 million	HCWA/USDA/DCA	Enhanced Water Quality Standards & Monitoring Practices
<i>Town of Centralhatchee (Heard County)</i>					
No water projects in SWTP					
<i>Town of Ephesus (Heard County)</i>					
Adopt overlay zone for Centralhatchee Creek water supply watershed.	2006-2007	Town of Ephesus	NA	Town of Ephesus/Heard County	Enhanced Water Quality Standards & Monitoring Practices
Upgrade and expand water system	2006-2010	Town of Ephesus	\$800,000	SPLOST/Town	Enhanced Water Quality Standards & Monitoring Practices
Continue to enforce and update Land Development Regulation Ordinance	2006-2010	Town of Ephesus	NA	Town of Ephesus	Enhanced Water Quality Standards & Monitoring Practices
<i>City of Franklin (Heard County)</i>					
Continue expansion and improvements of Chattahoochee Greenway, including passive and active recreational venues where appropriate	2006-2010	City of Franklin	\$500,000	City/DNR	Management Practices to Protect Significant Natural Resources
Upgrade sewer collection system	2006-2010	City of Franklin/Heard County Water Authority	\$1 million	CDBG	Enhanced Water Quality Standards & Monitoring Practices
<i>Carroll County</i>					

Georgia Environmental Protection Division
 Middle Chattahoochee Water Council
Existing Regulatory and Local Plan Summary

Table A-4: Three Rivers Regional Commission – Review of Local Comprehensive Plans, Water Resource BMPs					
Description of Identified Practices by Local Planning Authority	Fiscal Year	Responsible Party	Cost Estimate	Funding Source	Type Water Management
Coordinate with Water Authority on growth issues	2008 - 2013	County Commissioners, Water Authority	\$0.00	County Budget	Water Demand Management Practices
Stormwater control ordinance	2008 - 2009	County Commissioners, Water Authority	\$0.00	County Budget	Enhanced Water Quality Standards and Monitoring Practices
Amend zoning to protect groundwater recharge areas.	2009 - 2013	County Commissioners, Community Development	\$0.00	County Budget	Enhanced Water Quality Standards and Monitoring Practices
Amend zoning to protect water supply watershed.	2009 - 2013	County Commissioners, Community Development	\$0.00	County Budget	Enhanced Water Quality Standards and Monitoring Practices
City of Bowdon (Carroll County)					
Build New Wastewater Treatment Plant	2007 - 2011	City Council	unknown	USDA/RD, EPD	Water Supply Management Practices
Obtain funding and permits to expand water production capability	ongoing	City Council	\$3,000,000	GEFA, USDA/RD	Water Demand Management Practices
Construct elevated storage tank	ongoing	City Council	\$350,000	USDA/RD	Enhanced Water Quality Standards & Monitoring Practices
Develop uniform county-wide watershed protection ordinance	ongoing	City Council, RC, & DCA	unknown	Local and other stakeholders	Water Supply Management Practices
City of Carrollton (Carroll County)					
Continue To Work Toward The Identification And Preservation Of Wetlands And Floodplains	2008-2012	City Staff	\$0.00	Local appropriations	Water Supply Management Practices
Continue Phased Upgrade of Water Distribution Lines	2008-2012	City Engineer	\$100,000	Local appropriations/ GDOT	Water Demand Management Practices
Continue Backflow / Cross Connection Program	2008-2012	City Engineer	\$50,000	Local appropriations	Enhanced Pollution Management Practices
Continue Assessing Need for Additional Raw Water Supply	2009-2010	City Engineer/WTP	\$50,000	Local appropriations	Water Supply Management Practices
Continue to Assess and Identify Alternative Emergency Water Supply	2009-2010	City Engineer/WTP	\$30,000	Local appropriations	Water Supply Management Practices

Georgia Environmental Protection Division
 Middle Chattahoochee Water Council
Existing Regulatory and Local Plan Summary

Table A-4: Three Rivers Regional Commission – Review of Local Comprehensive Plans, Water Resource BMPs					
Description of Identified Practices by Local Planning Authority	Fiscal Year	Responsible Party	Cost Estimate	Funding Source	Type Water Management
Improvements to Lake Carroll Dam/Spillway Based on Assessment	2009-2010	City Engineer	\$800,000	SRF FUND / GEFA / Revenue Bonds	Water Supply Management Practices
Construct and/or Participate in the Construction of a Raw Water Reservoir/ Treatment Facility/Distribution System to Meet GA EPD Approved Needs Analysis Through 2050	2009-2011	City Engineer/ WWTP/WTP	\$6-18 million	SPLOST / SRF Fund / GEFA / State and/or Federal Appropriations	Enhanced Pollution Management Practices
Continue Assessing Need for Gray Water Reclamation Project	2009-2010	City Engineer/ WWTP	\$25,000	SRF Fund / GEFA / Local Appropriations	Enhanced Pollution Management Practices
City of Mount Zion (Carroll County)					
Write ordinance for the Environmental Section V	2009-2010	City of Mount Zion	\$2,500	City Funds	Water Supply Management Practices
Town of Roopville (Carroll County)					
No water or wastewater issues covered in STWP					
City of Temple (Carroll County)					
Continue land management best practices in environmentally sensitive areas	2008-2011	City	NA	NA	Water Supply Management Practices
Cooperate in inter-jurisdictional/regional environmental protection programs	2008-2011	City, RC, Carroll County	NA	NA	Water Supply Management Practices
Continue to upgrade sewer and water distribution/collection system	2008-2011	City	\$500,000	City SPLOST/Grants	Water Return Management Practices
City of Villa Rica (Carroll County)					
Waste Water Extension	2009-2011	City	\$35 million	General Fund, SPLOST	Water Return Management Practices
Downtown Waterline Replacement	2009-2013	City	\$1 million	General Fund, SPLOST	Water Supply Management Practices
4 Year Meter Replacement Program	2008-2009	City	\$100,000	SPLOST/County	Water Quality Standards & Monitoring Practices
Contract with Douglas County Water & Sewer Authority	2008	City/Douglas County	\$1,500,000	N/A	Water Quality Standards & Monitoring Practices
Bay Springs Regional Lift Station	2009-2010	City	\$805,000	Water/Sewer General Fund, SPLOST	Water Supply Management Practices

Georgia Environmental Protection Division
 Middle Chattahoochee Water Council
Existing Regulatory and Local Plan Summary

Table A-4: Three Rivers Regional Commission – Review of Local Comprehensive Plans, Water Resource BMPs					
Description of Identified Practices by Local Planning Authority	Fiscal Year	Responsible Party	Cost Estimate	Funding Source	Type Water Management
SR 61 Waterline & Booster Pump	2009	City	\$1,000,000	Water/Sewer General Fund, SPLOST	Water Supply Management Practices
Cowan Lake Pump	2009	City	\$100,000	Water/Sewer General Fund, SPLOST	Water Supply Management Practices
Rockmart Connors Water Line Loop	2009-2010	City	\$275,000	Water/Sewer General Fund, SPLOST	Water Demand Management Practices
Dallas Hwy Stockmar Rd Water Line Loop	2010	City	\$225,000	Water/Sewer General Fund, SPLOST	Water Demand Management Practices
Florence Circle/Edge Rd lift station	2010-2011	City	\$500,000	Water/Sewer General Fund, SPLOST	Water Supply Management Practices
Mirror Lake Water Tank	2011-2012	City	\$1,500,000	Water/Sewer General Fund, SPLOST	Water Demand Management Practices
Off Channel Water Storage	2012-2013	City	\$10,500,000	Water/Sewer General Fund, SPLOST	Water Demand Management Practices
North Plant to West Plant Sewer Loop	2000-2008	City	\$18,000,000	Water/Sewer General Fund, SPLOST	Water Demand Management Practices
Water Sewer Lines Improvement & Meters	2009-2013	City	\$1,000,000	General Fund, SPLOST	Water Demand Management Practices
North loop water/sewer line extension	2010-2011	City	\$1,250,000	General Fund, SPLOST	Water Demand Management Practices
North Plant Digester	2009	City	\$750,000	SPLOST, Water/Sewer	Water Demand Management Practices
Phase I New Sewer Plant Expansion	2008-2011	City	\$16 million	General Fund, SPLOST	Enhanced Pollution Management Practices
City of Whitesburg (Carroll County)					
Construct Phase I Wastewater System	2010-2013	City	\$1 million	General Fund/Grants	Enhanced Pollution Management Practices
Construct Phase II Wastewater	2010-2013	City	\$1 million	General Fund/Grants	Enhanced Pollution Management Practices
Computerize the water meter reading system	2010-2013	City	\$10,000	General Fund/SPLOST	Water Supply Management Practices

Georgia Environmental Protection Division
 Middle Chattahoochee Water Council
Existing Regulatory and Local Plan Summary

Table A-5. State and Federally Protected Aquatic Species Specific to the Middle Chattahoochee Water Planning Region				
Scientific Name	Common Name	Federal Status	State Status	Group
Ameiurus serracanthus	Spotted Bullhead		Rare	Fish
Cyprinella callitaenia	Bluestripe Shiner		Rare	Fish
Etheostoma chuckwachatte	Lipstick Darter		Endangered	Fish
Etheostoma parvipinne	Goldstripe Darter		Rare	Fish
Etheostoma tallapoosae	Tallapoosa Darter		Rare	Fish
Fundulus bifax	Stippled Studfish		Endangered	Fish
Hybopsis lineapunctata	Lined Chub		Rare	Fish
Notropis hypsilepis	Highscale Shiner		Rare	Fish
Percina smithvanizi	Muscadine Darter		Rare	Fish
Pteronotropis euryzonus	Broadstripe Shiner		Rare	Fish
Alasmidonta triangulata	Southern Elktoe		Endangered	Invertebrates
Cambarus englishi	Tallapoosa Crayfish		Rare	Invertebrates
Elliptio arctata	Delicate Spike		Endangered	Invertebrates
Elliptio purpurella	Inflated Spike		Threatened	Invertebrates
Elliptoideus sloatianus	Purple Bankclimber	Threatened	Threatened	Invertebrates
Hamiota altilis	Finelined Pocketbook	Threatened	Threatened	Invertebrates
Hamiota subangulata	Shinyrayed Pocketbook	Endangered	Endangered	Invertebrates
Medionidus penicillatus	Gulf Moccasinshell	Endangered	Endangered	Invertebrates
Pleurobema pyriforme	Oval Pigtoe	Endangered	Endangered	Invertebrates
Procambarus verrucosus	Grainy Crayfish		Rare	Invertebrates
Procambarus versutus	Sly Crayfish		Rare	Invertebrates
Strophitus subvexus	Southern Creekmussel		Endangered	Invertebrates
Graptemys barbouri	Barbour's Map Turtle		Threatened	Reptiles
Macrochelys temminckii	Alligator Snapping Turtle		Threatened	Reptiles

Notes: Data provided by the Department of Natural Resources – Wildlife Resources Division. Detailed species accounts are available at the following website: <<http://www.georgiawildlife.com/node/1379>>

Georgia Environmental Protection Division
 Middle Chattahoochee Water Council
Existing Regulatory and Local Plan Summary

Table A-6, High Priority Waters for Protecting Aquatic Biodiversity in the Middle Chattahoochee Water Planning Region	
Classification	Waters
High Priority Aquatic Community Stream	Mulberry Creek, Hillabahatchee Creek, Town Creek, Bear Creek
High Priority Species Stream	Walker Creek, Water Mill Creek, Centralhatchee Creek, Ichawaynochaway Creek, Hannahatchee Creek, Hodchodkee Creek, Pataula Creek
High Priority Species and Aquatic Community Streams	Little Tallapoosa River, Big Indian Creek, Whooping Creek, Beach Creek, Little River, Tallapoosa River, Lazer Creek
Source: Georgia Rare Species and Natural Community Information: High Priority Waters. Georgia Department of Natural Resources – Wildlife Resources Division, < http://www.georgiawildlife.com/node/1377 >	